

Prepared by: Abie C. Davis, P.E. & L.S., 1428 Oregon St., Knoxville, Iowa 50138 Phone: (515) 842-5863

UNITED STATES PUBLIC LAND SURVEY CORNER CERTIFICATE

SL519-94

Land survey Monuments situated in Section 36, Township 75N, Range 21W, of the Fifth Principal Meridian, Marion County, Iowa.

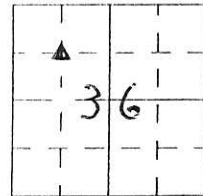
Previously recorded in N/A in County Recorders Office.

Show reason for preparing this certificate, the evidence and detailed procedures used in establishing the corner positions and monumentation found or placed

Monument Description and Remarks: Found 1/2" Iron Pin

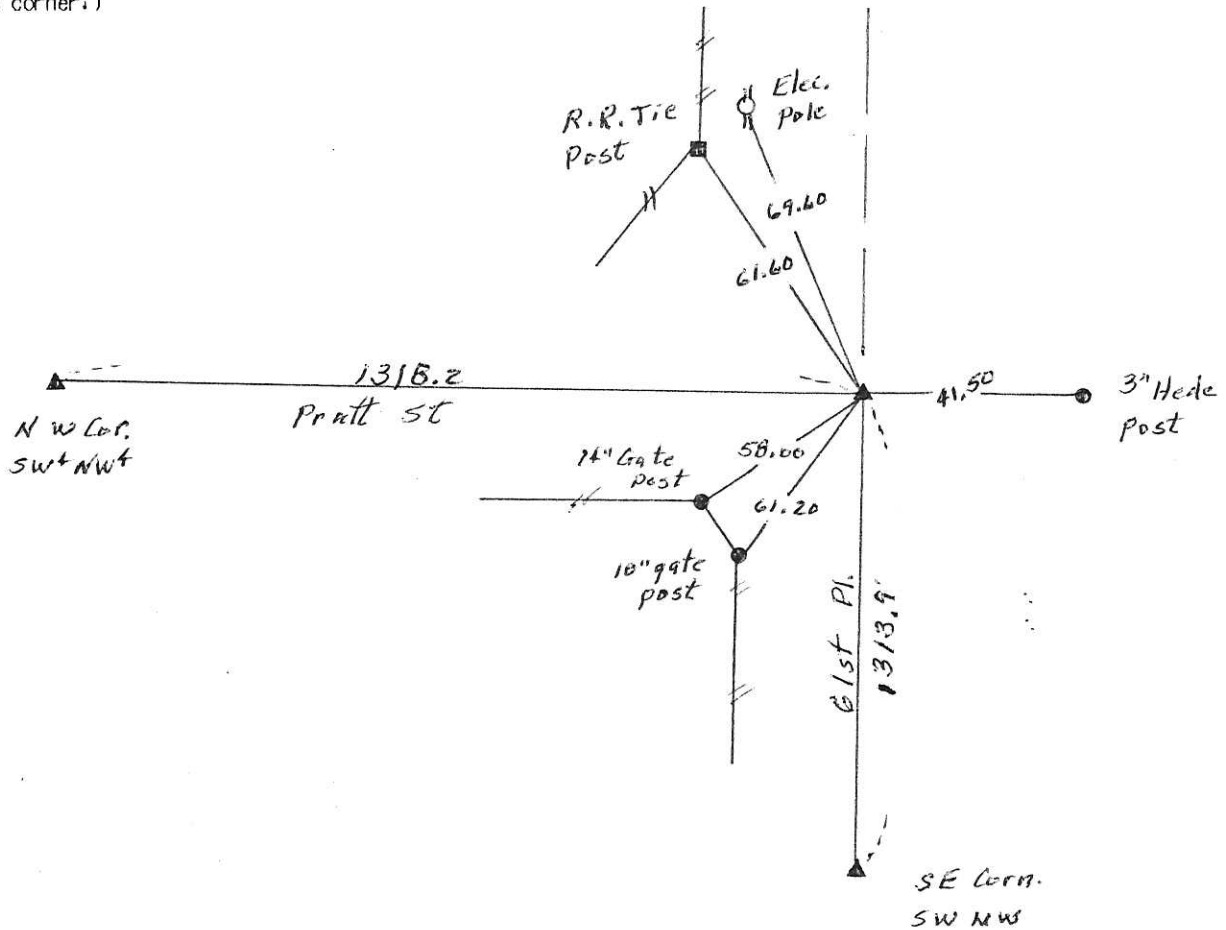
10" deep. Set 5/8" I.P. Cap # 5594 on N. edge

1/2" pin and 3" deep.



PLAN - VIEW

(Show a minimum of three reference ties to durable physical objects, relevant monuments and physical conditions that will enable recovery of the corner.)



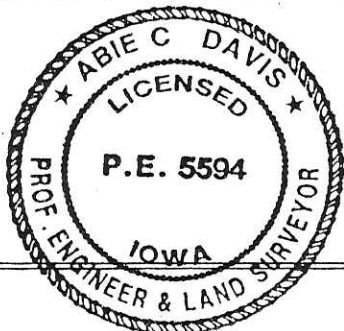
I hereby certify that the survey work was completed and this land surveying document was prepared by me or under my direct personal supervision and that I am a duly licensed land surveyor under the laws of the state of Iowa

Signature: Abie C. Davis
Abie C. Davis, P.E. & L.S.

Date: 8/24/16 Reg. No. 5594

My license renewal date is December 31, 2017

SEAL



List Corners to be Indexed			
Corners	Section	Twp	Range
NE Cor.	36	75N	21W
SW+NW			

Pd \$700 Cash - Ret Abie Davis