

Instr. Number: 20-4975  
 BK: 2020 PG: 4975  
 Recorded: 9/3/2020 at 10:07:02.0 AM  
 County Recording Fee: \$7.00  
 Iowa E-Filing Fee: \$3.13  
 Combined Fee: \$10.13  
 Revenue Tax:  
 KAREN SCHWANEBECK, RECORDER  
 Marion County, Iowa

PREPARED BY // RETURN TO:  
 CHAD ASBERRY // ASBERRY SURVEYING, LLC, 845 23RD STREET, WEST DES MOINES, IA 50265, TEL: 515-783-2958

UNITED STATES PUBLIC LAND SURVEY CORNER CERTIFICATE

OF LAND SURVEY MONUMENT(S) SITUATED IN SECTION 2 , TOWNSHIP 75 N , RANGE 21 W , OF THE FIFTH PRINCIPAL MERIDIAN, MARION COUNTY, IOWA. PREVIOUSLY RECORDED IN SEE BELOW IN COUNTY RECORDER'S OFFICE.

MONUMENT DESCRIPTION AND REMARKS:

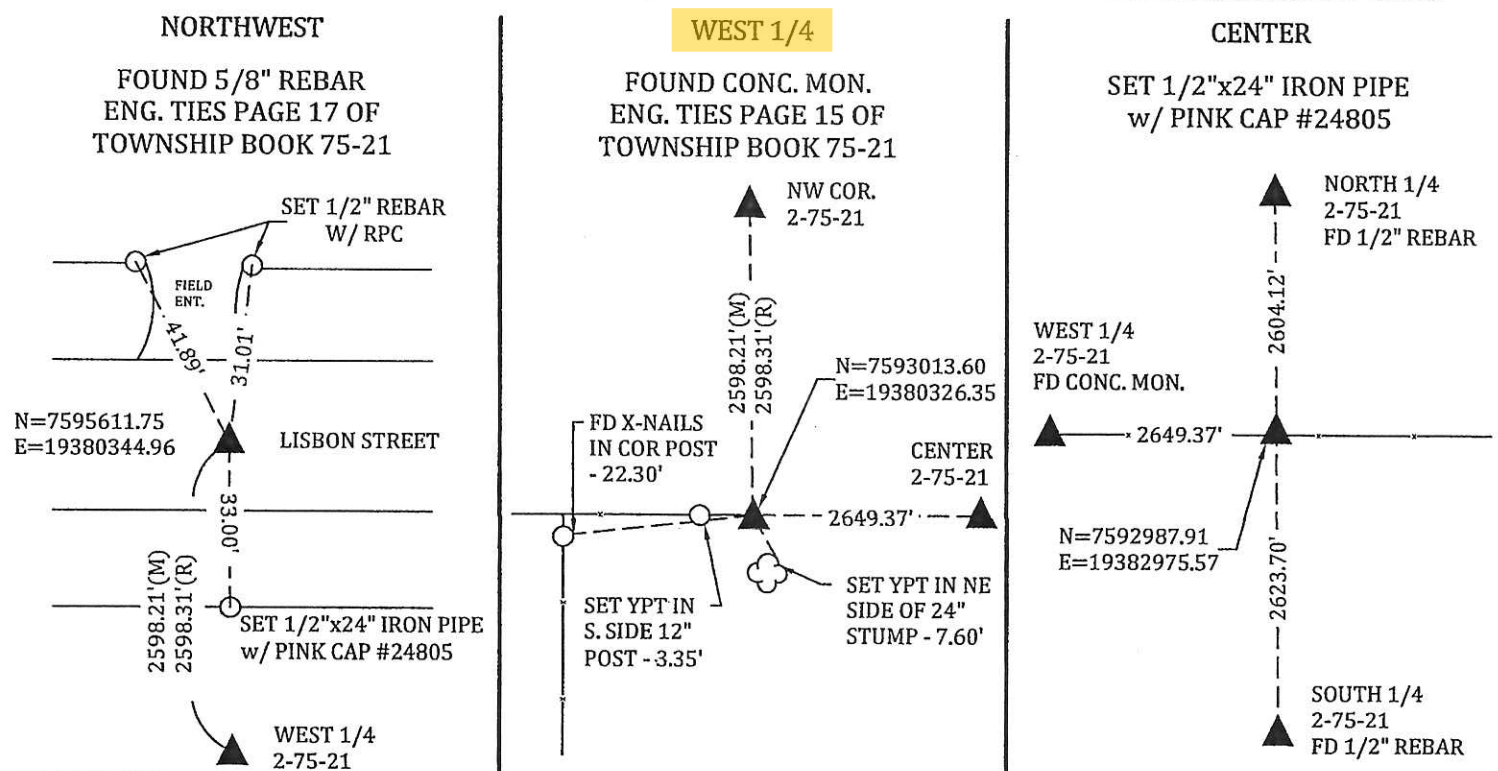
**NORTHWEST** - FOUND 5/8" REBAR 0.8' BELOW GRAVEL SURFACE AS INDICATED ON ENGINEER'S TIES FROM PAGE 17 OF THE TOWNSHIP BOOK "75-21" IN COUNTY ENGINEER'S OFFICE. NO TIES REMAIN BUT MONUMENT CLOSELY MATCHES DIMENSION TO THE FOUND MONUMENT AT THE WEST 1/4 CORNER OF SECTION 2-75-21 AND REMAINING FENCE LINE THAT CAN BE SEEN ON AERIAL PHOTOS DATING BACK TO 1960's. ACCEPTED FOUND 5/8" REBAR AND SET THREE NEW TIES.

**WEST 1/4** - FOUND CONCRETE MONUMENT 0.1' BELOW DIRT SURFACE IN EXISTING EAST-WEST FENCE LINE AS SHOWN IN ENGINEER'S TIES FROM PAGE 15 OF THE TOWNSHIP BOOK "75-21" IN THE COUNTY ENGINEER'S OFFICE. TWO TIES REMAINED AND CHECKED WELL. FOUND MONUMENT CLOSELY MATCHES DIMENSION TO FOUND MONUMENT AT THE NORTHWEST CORNER OF SECTION 2-75-21. ACCEPTED FOUND CONCRETE MONUMENT AND SET THREE NEW TIES.

**CENTER** - NO RECORD OF MONUMENT IN THE COUNTY RECORDER'S OR ENGINEER'S OFFICE. SEARCHED AND PROBED AREA AT THEORETICAL LOCATION AND AT THE INTERSECTION OF A LINE BETWEEN THE N 1/4 AND S 1/4 CORNERS AND AN EXISTING QUARTER SECTION FENCE LINE AND FOUND NOTHING. SAID FENCE LINE IS LONG STANDING AND CAN BE SEEN IN AERIAL PHOTOS DATING BACK TO 1960's AND ALSO MEASURES WITHIN REASON TO THEORETICAL LOCATION. ACCEPTED SAID FENCE LINE AS BEST EVIDENCE AND SET A 1/2"x24" IRON PIPE w/ PINK CAP #24805 ON LINE BETWEEN THE N 1/4 AND S 1/4 CORNERS AT EXISTING EAST-WEST FENCE. TIED TO FOUND SECTION CORNERS DUE TO LACK OF STABLE AND DURABLE FEATURES.

CORNER CERTIFICATE IS BEING PREPARED AS PART OF A SURVEY LOCATED IN THE NW FRACTIONAL 1/4 OF THE NW FRACTIONAL 1/4

(SHOW A MINIMUM OF THREE REFERENCE TIES TO DURABLE PHYSICAL OBJECTS, RELEVANT MONUMENTS AND PHYSICAL CONDITIONS THAT WILL ENABLE RECOVERY OF CORNER.)



**LEGEND:** YPT - NAIL WITH YELLOW PLASTIC "SURVEY MARKER" TAG      RPC - RED PLASTIC "SEC COR TIE" CAP      DISTANCES ARE MEASURED HORIZONTAL      COORDINATES ARE IOWA RCS ZONE #9 - NEWTON



I HEREBY CERTIFY THAT THIS LAND SURVEYING DOCUMENT WAS PREPARED AND RELATED SURVEY WORK WAS PERFORMED BY ME OR UNDER MY DIRECT PERSONAL SUPERVISION AND THAT I AM A DULY LICENSED LAND SURVEYOR UNDER THE LAWS OF THE STATE OF IOWA.

*[Signature]*      9/2/2020  
 CHAD R. ASBERRY, PLS #24805      DATE  
 LICENSE RENEWAL DATE: DEC. 31, 2021.  
 SHEETS COVERED BY THIS SEAL: 1 OF 1

| CORNERS TO BE INDEXED |         |     |       |
|-----------------------|---------|-----|-------|
| CORNER                | SECTION | TWP | RANGE |
| NW CORNER             | 2       | 75N | 21W   |
| WEST 1/4              | 2       | 75N | 21W   |
| CENTER                | 2       | 75N | 21W   |

NOT TO SCALE

SHEET 1 OF 1



Found Sandstone 14" x 14" x 2" AND  
1 Q tile 4 1/2" x 3 1/2"

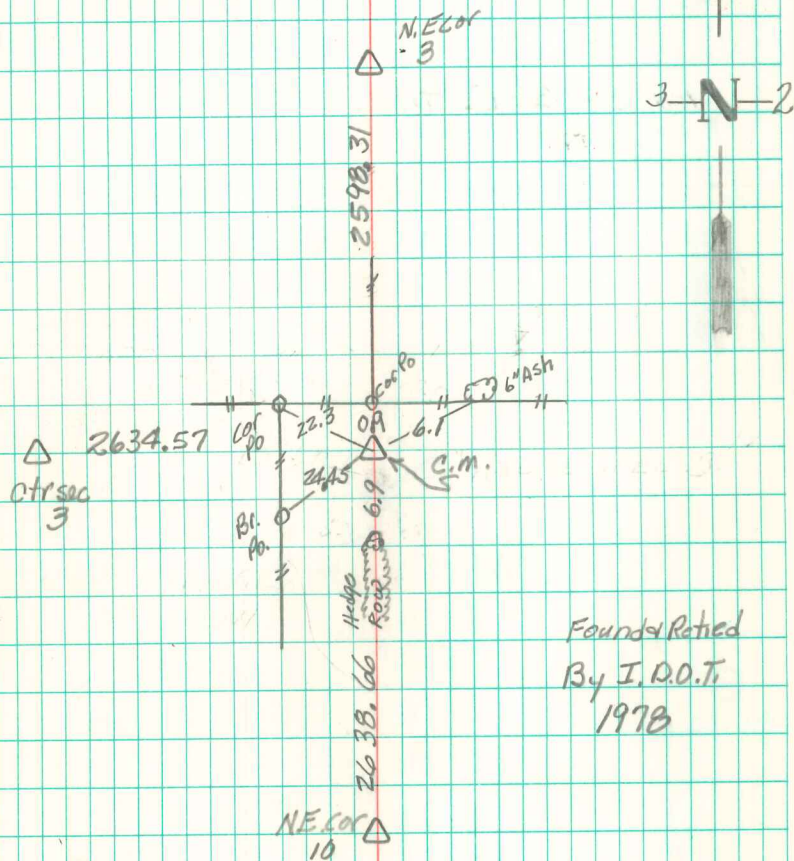
Set C.M. OVER tile AND placed  
STONE on north side C.M.

- 29.0 S.E. of 4" Hedgetree in R.O.W. 8<sup>dx</sup>
- 10.0 S.W. " White OAK Post
- 5.0 N.W. of 4" Hedge Tree in R.O.W. 8<sup>dx</sup>

E 1/4 Cor 3-75-21  
Set 6-26-40  
NANDALL, FRAZIER, HARGER

SKETCH BY  
WIGNALL

15



Found & Retied  
By I.D.O.T.  
1978