

KAREN SCHWANEBECK, RECORDER
MARION COUNTY IOWA

Prepared By: **Johnstone & Associates**, 116 West 4th Street South, P.O. Box 903, Newton, Iowa 50208 - Phone: (641) 787-9600

UNITED STATES PUBLIC LAND SURVEY CORNER CERTIFICATE

OF

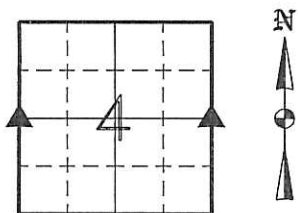
Land Survey Monuments situated in Section 4, Township 75 North, Range 21 West, of the 5th Principal Meridian,
Marion County, Iowa. Not previously recorded.

West 1/4 Corner. - Corner not previously recorded but is listed in the Marion County Engineers Section Corner Monument Tie Records as a 15"x12"x6" Sandstone over WPA Monument over a 2" D-Tile standing on end. Corner Recovery - ties were all missing. Probed area North & East of fence intersection as shown on WPA 1941 notes, found nothing. Expanded search area and found Std. WPA monument with brass cap and pieces of sandstone in surrounding area. Accepted monument position as the corner, took new ties.

East 1/4 Corner. - Corner not previously recorded but is listed in the Marion County Engineers Section Corner Monument Tie Records as a 1978 established IDOT Monument 8" exposed. Corner Recovery - Found East-West fence East of railroad and started to look for reference items as shown on the tie sheet, ties were all missing. Found Std. IDOT monument with 5/8" iron rod and orange point approximately 8" exposed just South of fence line. Accepted monument position as the corner, took new ties. Corners were recovered for an easement survey in Southeast Quarter of the Northeast Quarter.

PLAN-VIEW

No Scale

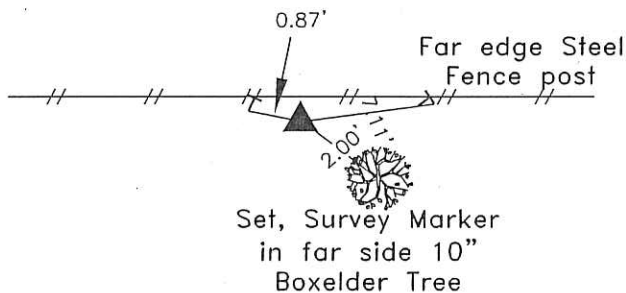
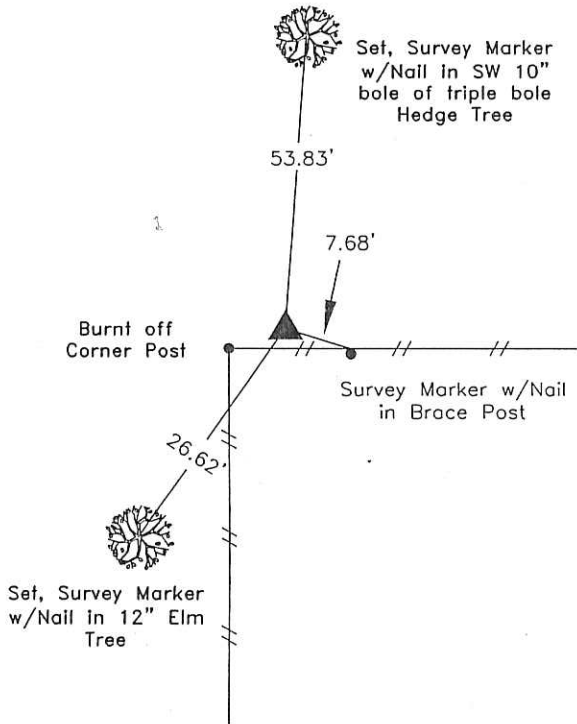


W 1/4
4-75N-21W

E 1/4
4-75-21

Found Standard WPA concrete monument with brass cap, 7" deep,
11" North of East-West fence

Found Standard IDOT Concrete Monument with 5/8" iron pin, 8"
exposed above ground .05' South of East-West fence. Established
by IDOT 1978



I hereby certify that this land surveying document was prepared and the related survey work was performed by me or under my direct personal supervision and that I am a duly Licensed Professional Land Surveyor under the laws of the State of Iowa.

Craig R. Johnstone

Craig R. Johnstone, P.L.S.

Iowa License No. 10039

My License Renewal Date Is: 31 Dec. 2016

10 NOV 2015

date

This Certification
Covers this Sheet Only.

List of Corners to be Indexed:

Corners	Section	Township	Range
W 1/4	4	75	21
E 1/4	5	75	21
E 1/4	4	75	21
W 1/4	3	75	21



Johnstone & Associates
Civil Engineering
Land Surveying
116 West 4th Street South
P.O. Box 903
Newton, IA 50208
Phone: (641) 787-9600
Fax: (641) 787-9602
www.johnstoneandassociates.biz

PROJECT NO: 15-023
DATE: 10 Nov 15
DRAFTED BY: CRJ
F.B. REF: 14/39
SHEET NO: 1

RD 7000x - Ret Johnstone & Assoc

Found Sand stone 15"x12"x6"

Set C.M. over 1-2" D Tile standing
on END.

Put stone top C.M.

E $\frac{1}{4}$ Cor. 5-75-21

Set - 5-14-41

Notes: Kennedy

Party - Wells, Burrus & Glass

