

Found 2-3" drain tile filled
with concrete over a piece
of 2 1/2" A tile - 8" long.
Right where we set mor.

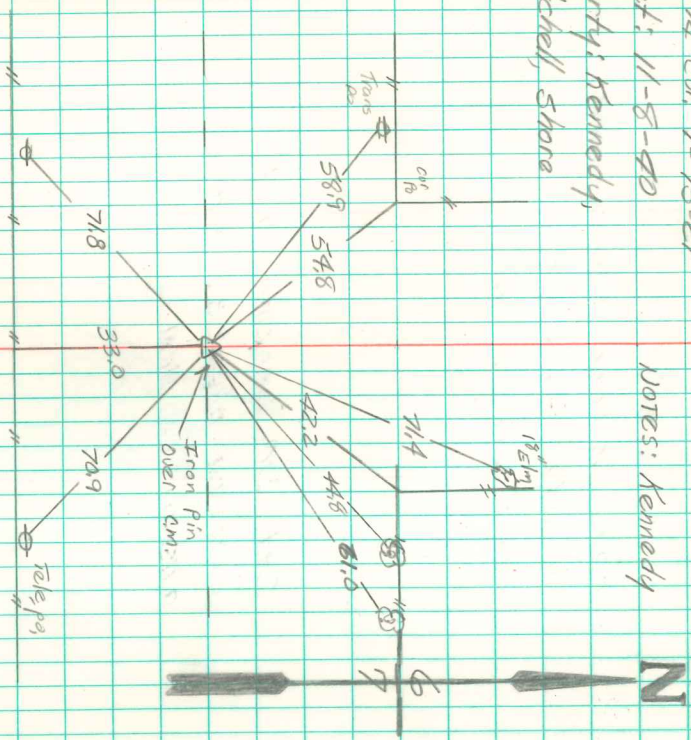
Set qm. on piece a tile
lowered in place. One 3"
tile on top mor.

11/4 Cor 7-75-21

Set: 11-8-90

Party: Kennedy,
Mitchell, Shore

Notes: Kennedy



QM Buried by Constr.
Found MAY 22 - 1950
By Vinsay, Moll's
Robinson, Plumbed
16 Gauge Shot Gun
Barrel Directly
over QM.