

601866



Document 21-3049

Book 2021 Page 3049 Type CORNR Pages 1
Date 5/10/2021 Time 1:58 PM
Rec Amt \$7.00



GARDEN & ASSOC.

P.O. Box 451, Oskaloosa, Iowa 52577-0451 Phone: (641)672-2526

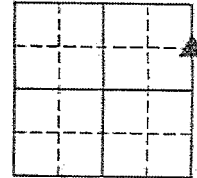
KAREN SCHWANEBECK, RECORDER
MARION COUNTY IOWA

UNITED STATES PUBLIC LAND SURVEY CORNER CERTIFICATE

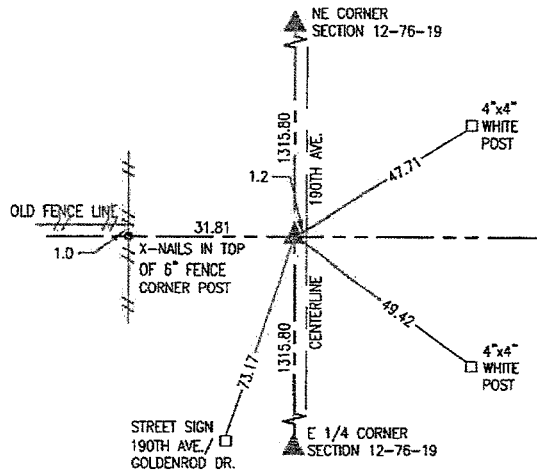
OF

Land Survey Monuments situated in Section 12, Township 76, Range 19, of the Fifth Principal Meridian, MARION County, Iowa.
Previously recorded in BOOK 1 PAGE 254 in County Recorder's Office.

Monument Description and Remarks: SEE BELOW



SE CORNER NE-NE



NOVEMBER 14, 1995 PLS 6708

SET PK NAIL IN ASPHALT AT MIDPOINT OF LINE BETWEEN E 1/4 CORNER AND NE CORNER OF SECTION 12.

APRIL 16, 2021 PLS 14416

ROADWAY HAS BEEN RESURFACED. COULD NOT FIND RECORDED PK NAIL. SET COTTON GIN SPIKE ON LINE AND MIDWAY BETWEEN E 1/4 CORNER AND NE CORNER OF SECTION 12.

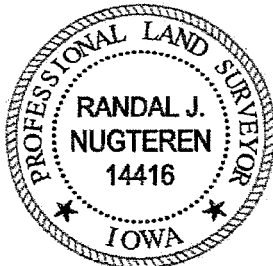
I hereby certify that this land surveying document was prepared and the related survey work was performed by me or under my direct personal supervision and that I am a duly licensed Professional Land Surveyor under the laws of the State of Iowa.

Randal J. Nugteren May 4, 2021
Randal J. Nugteren, P.L.S. Date

License number: 14416

My license renewal date is December 31, 2022

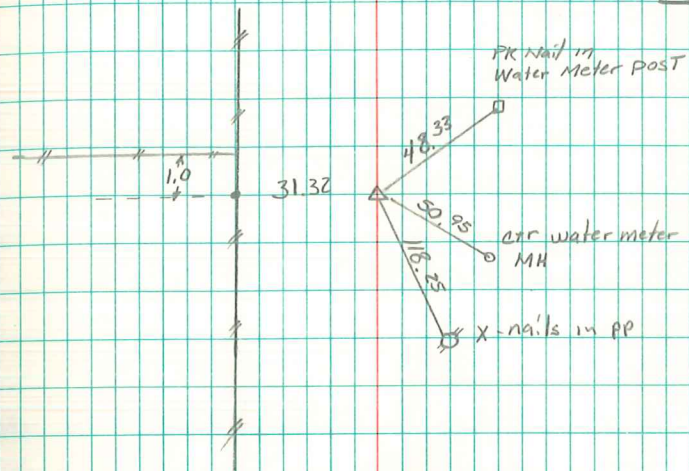
SEAL



| List Corners to be Indexed | | | |
|----------------------------|---------|----------|-------|
| Corners | Section | Township | Range |
| SE CORNER NE-NE | 12 | 76 | 19 |

R170CK-Ret Garden & Assoc. Env.

NE COR SE¹/₄-NE¹/₄
 Sec 12 76-19



November 14, 1995 set pk nail in
 Asphalt at mid point between E¹/₄ cor
 & NE cor.
 Leroy Nugteren