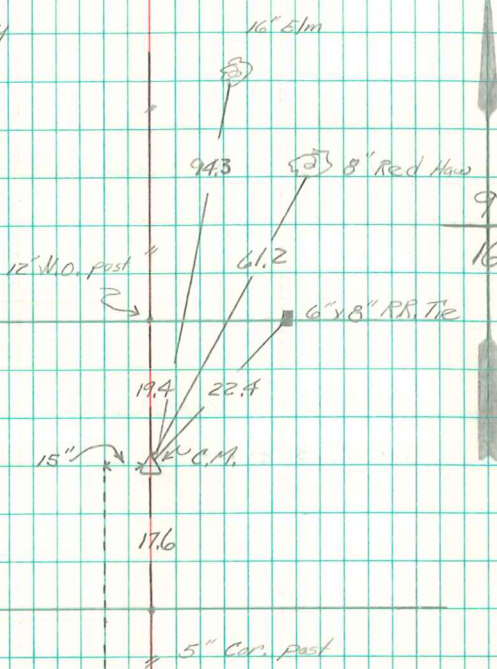
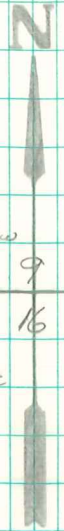


Found two stones over tile and
along west side of past Building
Block on Top.

Set C.M. over tile ?

N 1/4 Cor. 16-76-19
Set: 7-25-39
Thomas, Liberty

D.L. Thomas
Notes: Wignall



6 Cottonwood
Trees 20 to 24" in
dia. } Line of 5 trees is in
line with C.M. ?