

N.E. Cor. 16-76-19

Set: 12-21-40

Notes: Kennedy

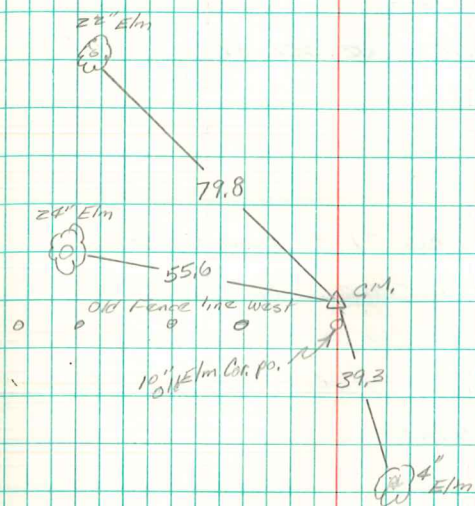
Kennedy, Shore, Mitchell

N

Found 2" gas pipe 23" long sticking
out top surface on east side of a
sandstone 23"-8"-7". Top Stone
12" under surface over 2-2" round
tile (Watkins tile).

Right where we set Mon. as shown
in picture.

Set Mon. over 1-2" round tile
lowered in place.
Stone on top Mon sticking above
surface. Gas pipe on North side Mon.



9 10
16 15