

KAREN SCHWANEBECK, RECORDER  
MARION COUNTY IOWA

Prepared by Abie C. Davis, P.E. & L.S., 1428 Oregon St., Knoxville, IA 50138 (641) 842-5863

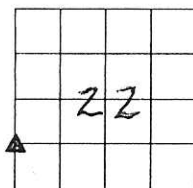
### UNITED STATES PUBLIC LAND SURVEY CORNER CERTIFICATE OF

Land survey Monuments situated in Section 22, Township 76N, Range 19W, of the Fifth Principal Meridian, Marion County, Iowa.

Previously recorded in N/A in County Recorders Office.

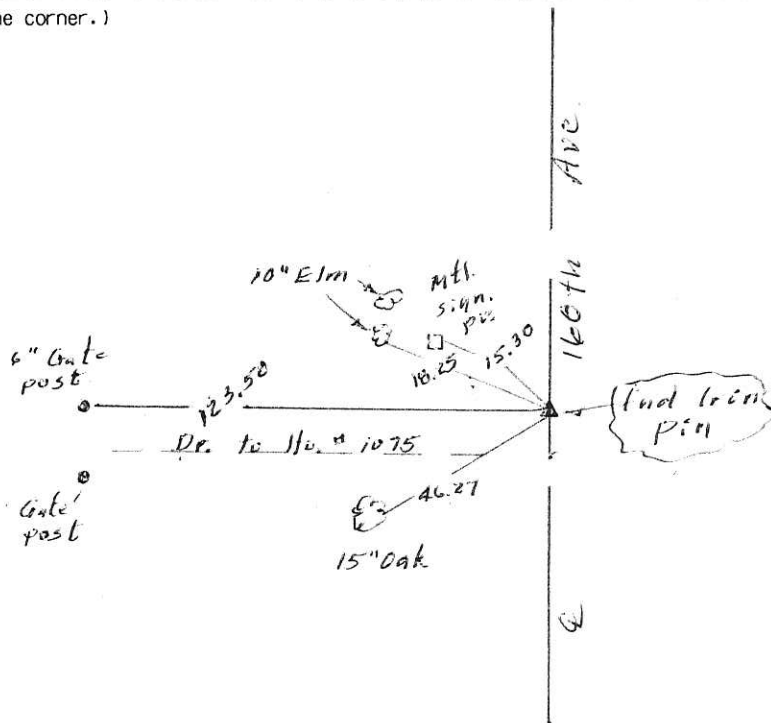
Show reason for preparing this certificate, the evidence and detailed procedures used in establishing the corner positions and monumentation found or placed

Monument Description and Remarks: Found Iron Pin  
on Rd 4 in line w/ fence west.



### PLAN - VIEW

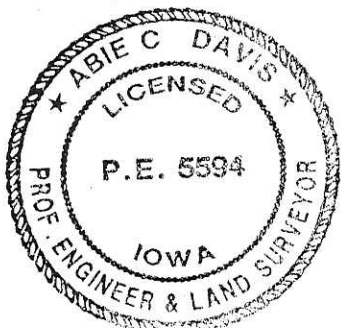
(Show a minimum of three reference ties to durable physical objects, relevant monuments and physical conditions that will enable recovery of the corner.)



I hereby certify that the survey work was completed and this land surveying document was prepared by me or under my direct personal supervision and that I am a duly licensed land surveyor under the laws of the state of Iowa

Signature: Abie C Davis  
Abie C. Davis, P.E. & L.S.  
Date: 9/28/16 Reg. No. 5594  
My license renewal date is December 31, 2017

SEAL



List Corners to be Indexed  
Corners Section Twp Range

NW Corn. 22 76N 19W  
SW & SW4

Pa. \$700 Cash - Ret. Abie Davis