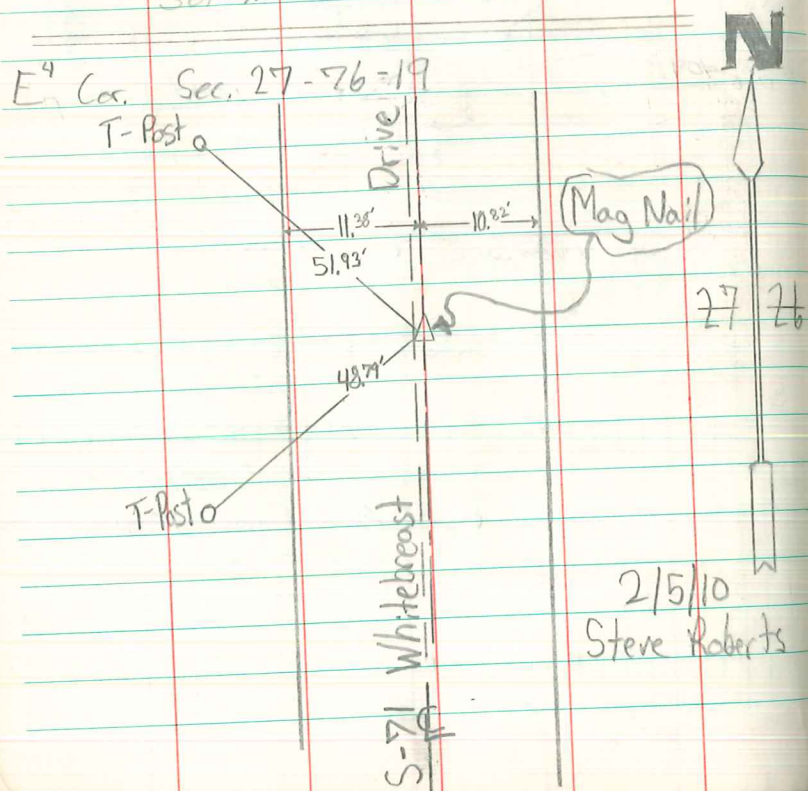


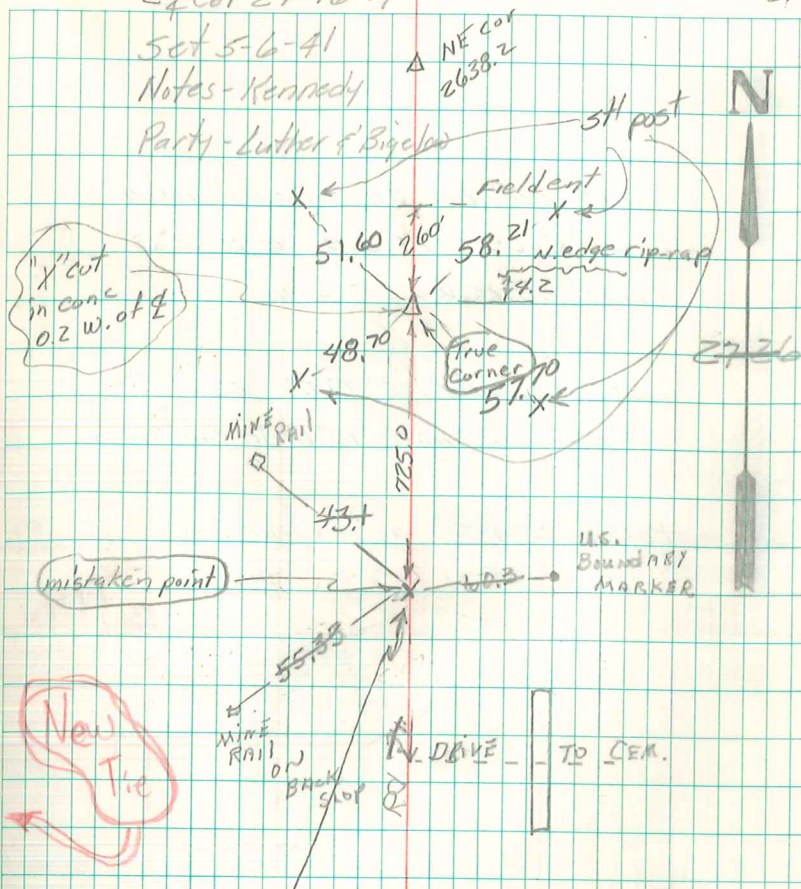
Re established Cor. By running Direct
Line between N.E. & S.E. Corners of sec.
Dug hole 4'x4'x3' deep at ctr. of old
orig 66' Highway & in line with R.E. East.
at 2640' S. of N.E. Cor. Found old Pine
stake 2' Below surface. Set on
Former survey at this point.
set MAR.



E⁴ Cor 27-76-19

Set 5-6-41
Notes - Kennedy

Party - Luther & Bigelow



SET CONC. NAIL
w/X CHISEL IN
CON 0.3 W OF E
3/28/88

This corner has been incorrectly identified & recorded.
The mistaken point is 725.0 S. of the E⁴ corner on line.
The E⁴ Cor as hereby located is at the mid-point of
on line between the N.E. corner & the S.E. Cor.
Abie Davis 3/22/02
relied 9/07