

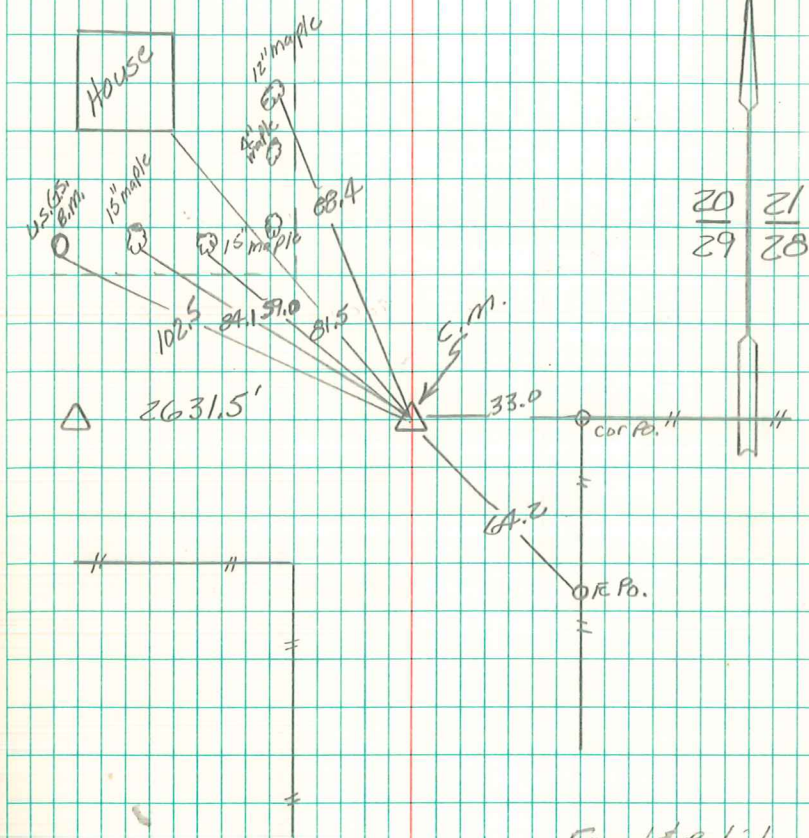
Found brick & 2 Pieces Concrete
 3" x 12" Corc. Post setting over
 $\frac{5}{8}$ " x 22" ϕ Iron Rod & Coal.

Lowered Coal & Broken Concrete
 in Place. Placed tile over same
 set c.m. over tile & $\frac{5}{8}$ " Iron Rod
 on North side C.M.

N.E. Cor 500 29-76-19

set - July - 1939

Notes: D. L. Thomas



20	21
29	28

Found & Retried
 9/21/31
 Pregon, Stone, Davis