

Found Sandstone 14" x 12" x 6"

Set C.M. and placed stone on north side.

N.E. Cor 2-76-19

D.L. Thomas

Set: 11-16-39

Notes: Nigaa 11

Kennedy, Frazier, & Burris

Ties Good 2-19-70

Found by Molt, Cameron, Gaul

May 26, 1967

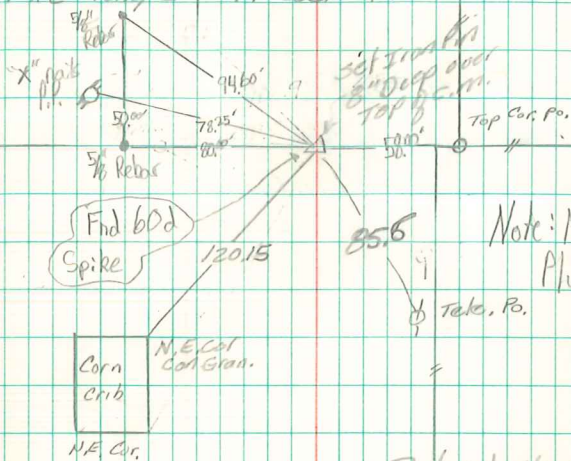
Cor. Stone 6' Deep, Top Broken off,

Elem

35 36

Set 1' x 2" long Gas P. over C.M.

2 1



Note: Measurements  
Plumbed + Chained

Take, P.B.

Retied Nov-26-1968

6/5/01

Gray Wayne Keith