



GARDEN & ASSOC.

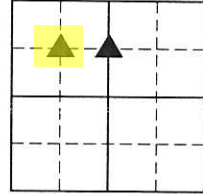
P.O. Box 451, Oskaloosa, Iowa 52577-0451 Phone: (641)672-2526

KAREN SCHWANEBECK, RECORDER
MARION COUNTY IOWA

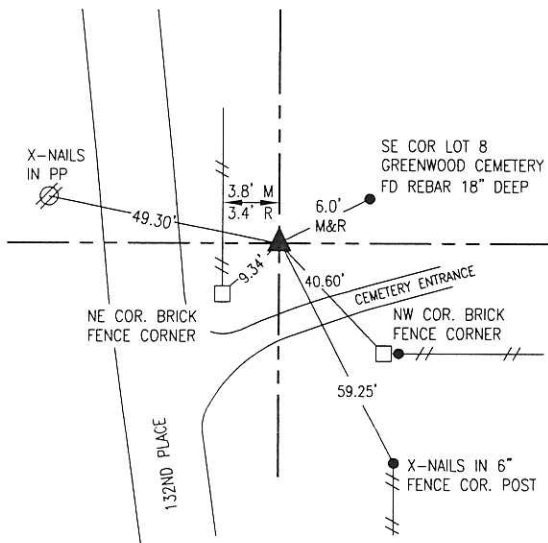
UNITED STATES PUBLIC LAND SURVEY CORNER CERTIFICATE

OF

Land Survey Monuments situated in Section 31, Township 76, Range 19, of the Fifth Principal Meridian, MARION County, Iowa. Previously recorded in NO CERTIFICATE OF RECORD in County Recorder's Office. Monument Description and Remarks: SEE BELOW



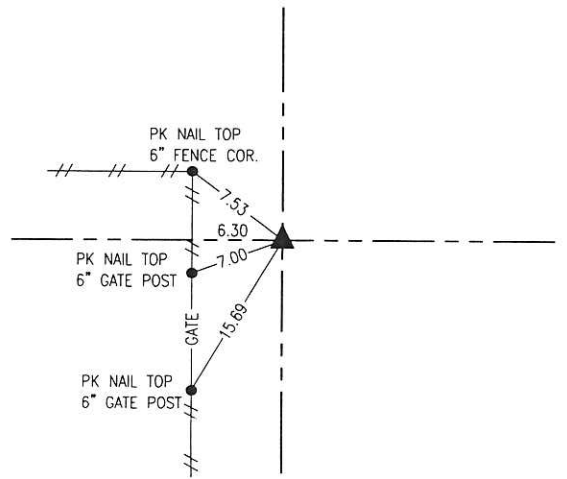
NW COR. SE FR-NW



NOVEMBER 1963
PLAT MAP OF GREENWOOD CEMETERY SHOWS A STONE AT THIS LOCATION.

JANUARY 2020
USED UNDATED COUNTY ENGINEER TIES TO IDENTIFY A SEARCH AREA. DUG A 4' X 4' HOLE 18" DEEP AND PROBED AN ADDITIONAL 2'. DID NOT FIND THE STONE. SET 5/8" REBAR WITH YELLOW PLASTIC CAP #19960 USING COUNTY ENGINEER TIES.

NE COR. SE FR-NW



JANUARY 2020

SET 5/8" X 30" REBAR WITH YELLOW PLASTIC CAP #19960 ONLINE AND MIDWAY BETWEEN THE CENTER AND NORTH 1/4 CORNER OF SECTION 31-76-19.

I hereby certify that this land surveying document was prepared and the related survey work was performed by me or under my direct personal supervision and that I am a duly licensed Professional Land Surveyor under the laws of the State of Iowa.

Bobby J. Maddaleno 1-18-20 Date
Bobby J. Maddaleno, P.L.S.
License number: 19960
My license renewal date is December 31, 2021

SEAL



List Corners to be Indexed			
Corners	Section	Township	Range
NW COR. SE FR-NW	31	76	19
NE COR. SE FR-NW	31	76	19

Pd \$700 Ck - Ret Coarden & Assoc enr

NW-NE
~~N.W.~~ - N.W. 1/4 Section 31-76-19

