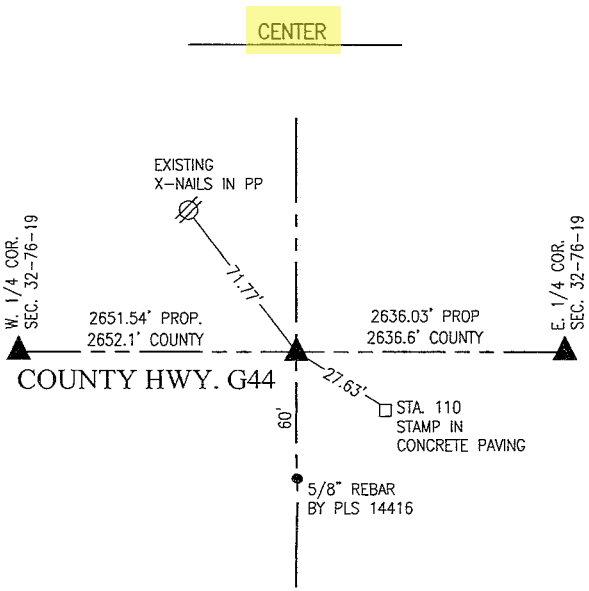
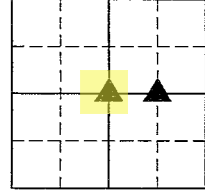


KAREN SCHWANEBECK, RECORDER
 MARION COUNTY IOWA

G GARDEN & ASSOC. P.O. Box 451, Oskaloosa, Iowa 52577-0451 Phone: (641)672-2526

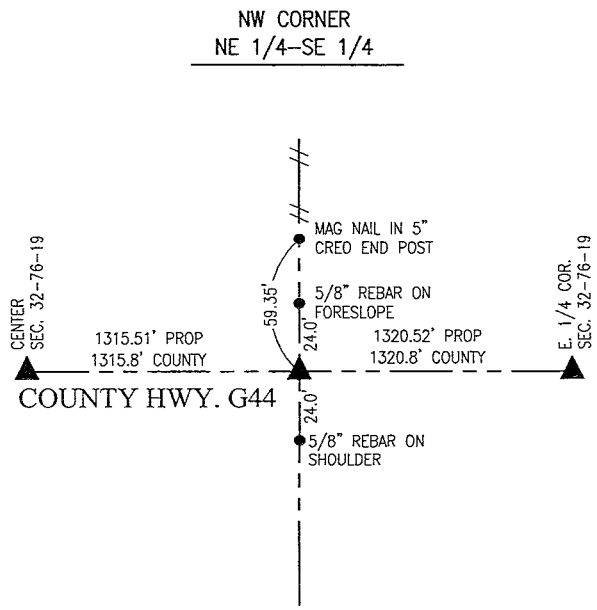
UNITED STATES PUBLIC LAND SURVEY CORNER CERTIFICATE
 OF

Land Survey Monuments situated in Section 32, Township 76, Range 19, of the Fifth Principal Meridian, MARION County, Iowa. Previously recorded in NO CERTIFICATE OF RECORD in County Recorder's Office. Monument Description and Remarks: SEE BELOW



OCTOBER 2018 - PLS 14416
 ESTABLISHED CORNER ON LINE AND PROPORTIONATE DISTANCE BETWEEN W. 1/4 CORNER AND E. 1/4 CORNER OF SECTION 32. PROPORTIONATE DISTANCE BASED ON COUNTY HIGHWAY R.O.W. PLAT IN MISC. REC. 6U PAGE 209.
 SET MAG NAIL IN CONCRETE PAVING 0.3' NORTH OF CL JOINT.

 MARCH 10, 2021 - PLS 14416
 FOUND MAG NAIL AT LOCATION DESCRIBED ABOVE.



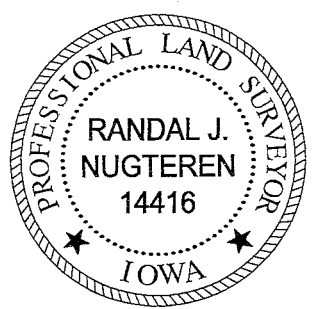
OCTOBER 2018 - PLS 14416
 ESTABLISHED CORNER ON LINE AND PROPORTIONATE DISTANCE BETWEEN CENTER AND E. 1/4 CORNER OF SECTION 32. PROPORTIONATE DISTANCE BASED ON COUNTY HIGHWAY R.O.W. PLAT IN MISC. REC. 6U PAGE 209.
 SET MAG NAIL IN CONCRETE PAVING 0.3' NORTH OF CL JOINT.

 MARCH 10, 2021 - PLS 14416
 FOUND MAG NAIL AT LOCATION DESCRIBED ABOVE.

I hereby certify that this land surveying document was prepared and the related survey work was performed by me or under my direct personal supervision and that I am a duly licensed Professional Land Surveyor under the laws of the State of Iowa.

Randal J. Nugteren March 25, 2021
 Randal J. Nugteren, P.L.S. Date
 License number: 14416
 My license renewal date is December 31, 2022

SEAL



List Corners to be Indexed			
Corners	Section	Township	Range
CENTER	32	76	19
NW CORNER NE 1/4-SE 1/4	32	76	19

Pd #70-ck-Rel G&A Env.