

Found limestone 6" x 8" = 4" x 6" x 22" over  
1-2"  $\Delta$  tile 1-2" broken tile.

Set C.M. over tile Horiz. N & S. Stone  
on N. Side.

N.E. Cor. 32-76-19

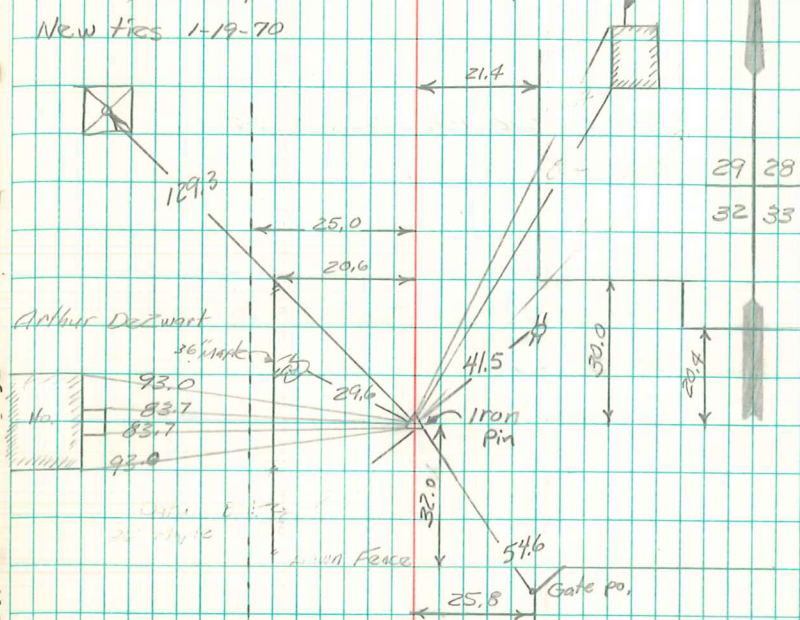
Set: 7-24-39

Nandell, Kennedy

New ties 1-19-70

Notes: Vignall

Washington School



Retied 7/23/81

Pregon, Stone, Davis