



GARDEN & ASSOC.

P.O. Box 451, Oskaloosa, Iowa 52577-0451 Phone: (641)672-2526

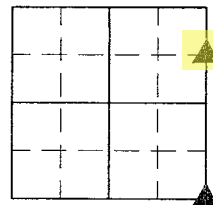
KAREN SCHWANEBECK, RECORDER
MARION COUNTY IOWA

UNITED STATES PUBLIC LAND SURVEY CORNER CERTIFICATE

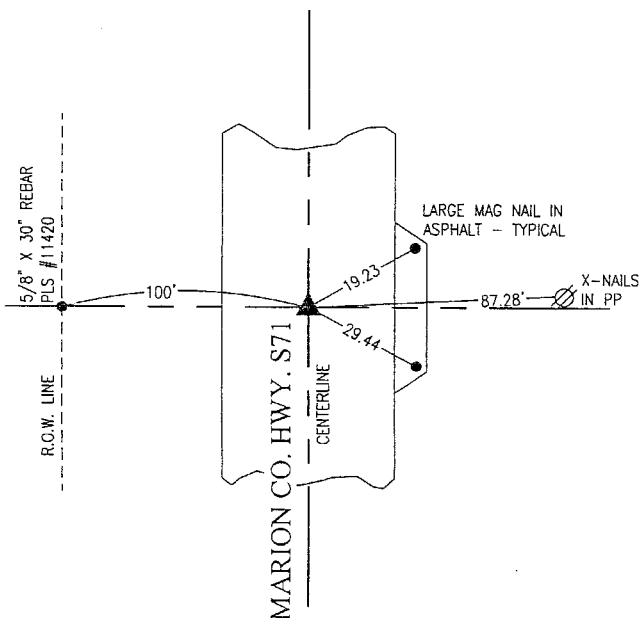
OF

Land Survey Monuments situated in Section 34, Township 76, Range 19, of the Fifth Principal Meridian, MARION County, Iowa. Previously recorded in N/A in County Recorder's Office.

Monument Description and Remarks: SEE BELOW

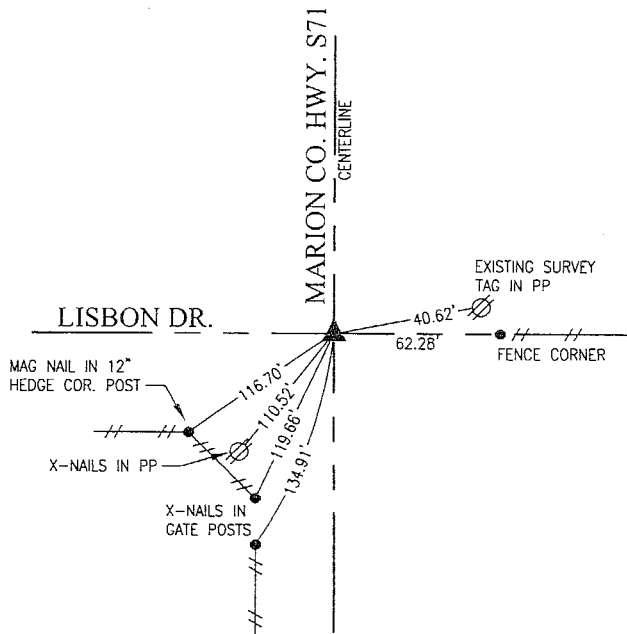


NE CORNER
SE 1/4-NE 1/4



AUG. 23, 2021
CORNER WAS LOST BY RESURFACING PROJECT. RESET AT MIDPOINT OF EAST LINE OF NE 1/4.

SE CORNER



AUG. 23, 2021
SET LARGE MAG NAIL IN CL OF PAVING AND FENCELINE TO EAST.

I hereby certify that this land surveying document was prepared and the related survey work was performed by me or under my direct personal supervision and that I am a duly licensed Professional Land Surveyor under the laws of the State of Iowa.

Gary Wayne Keith 31 Aug 2021
Gary Wayne Keith, P.L.S. Date

License number: 11420

My license renewal date is December 31, 2022

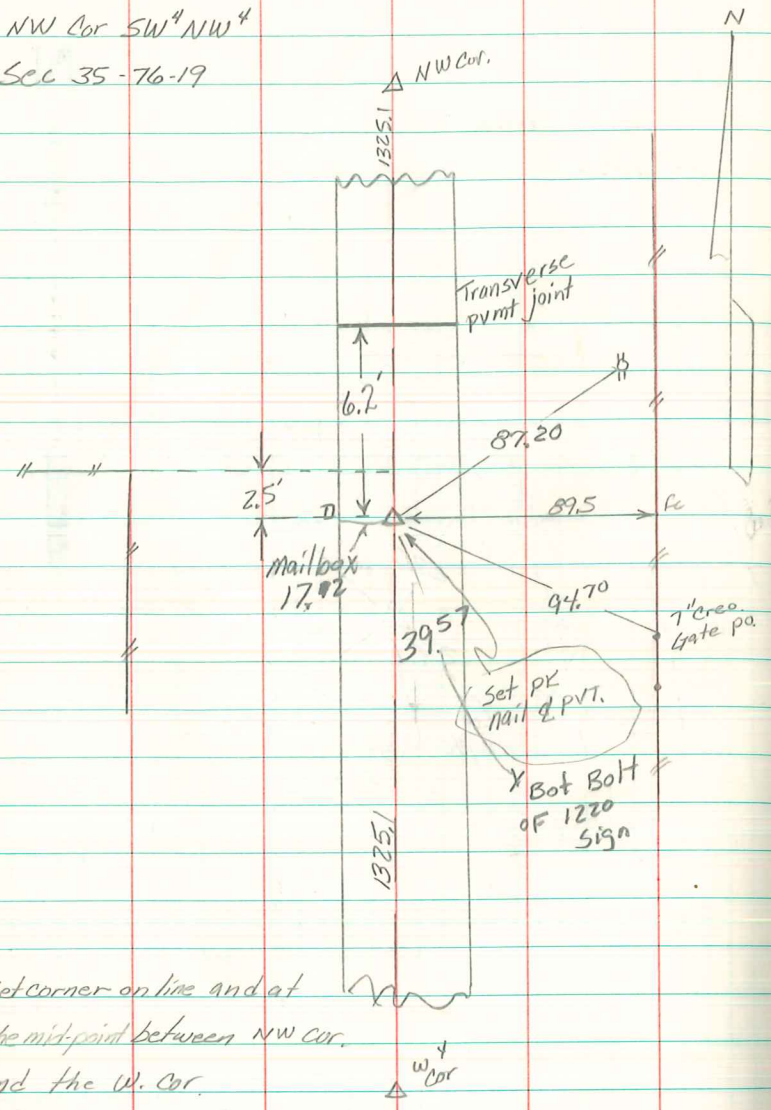
SEAL



List Corners to be Indexed			
Corners	Section	Township	Range
NE CORNER SE 1/4-NE 1/4	34	76	19
SE CORNER	34	76	19

PL#100 OK - Ret G&A ENV.

NW Cor SW⁴ NW⁴
 Sec 35-76-19



Set corner on line and at
 the mid-point between NW cor.
 and the W. cor.

Abie Davis 2/10/00
 9/07