

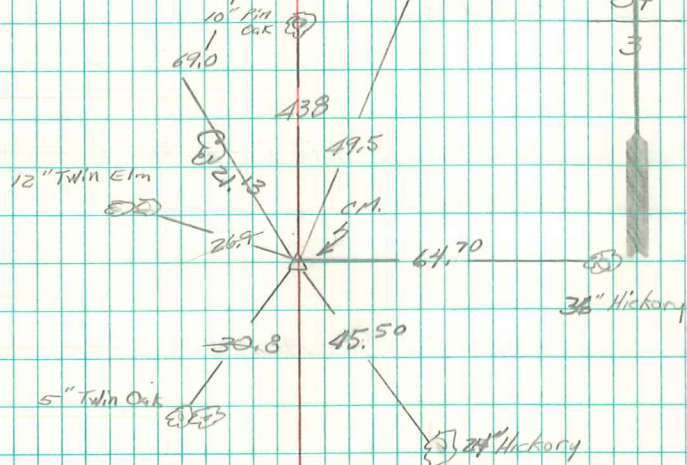
Found 2 yellow sand stones
 24" x 14" x 3" & 18" x 12" x 4" q/s
 1-3" drain tile,

Set C.M. and placed tile on
 N. side stones on E. side.

N¹/₄ Cor. 3-76-19
 Set: 11-16-59
 Rooms, Durham & Eddinger

D. Thomas

Notes: Wignall



End CM Top 15" broken,
 Set CM Top on base of CM
 Set 5/8" iron pin 4/cap # 5594
 on South Side CM,
 CM Top 2" Above ground

4/4/03 Abie Davis