

2018-1282

Prepared by Abie C. Davis, P.E. & L.S., 1428 Oregon St., Knoxville, IA 50138 (641) 842-5863

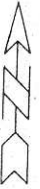
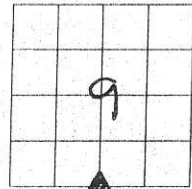
UNITED STATES PUBLIC LAND SURVEY CORNER CERTIFICATE OF

Land survey Monuments situated in Section 9, Township 76N, Range 20W, of the Fifth Principal Meridian, Marion County, Iowa.

Previously recorded in N/A in County Recorders Office.

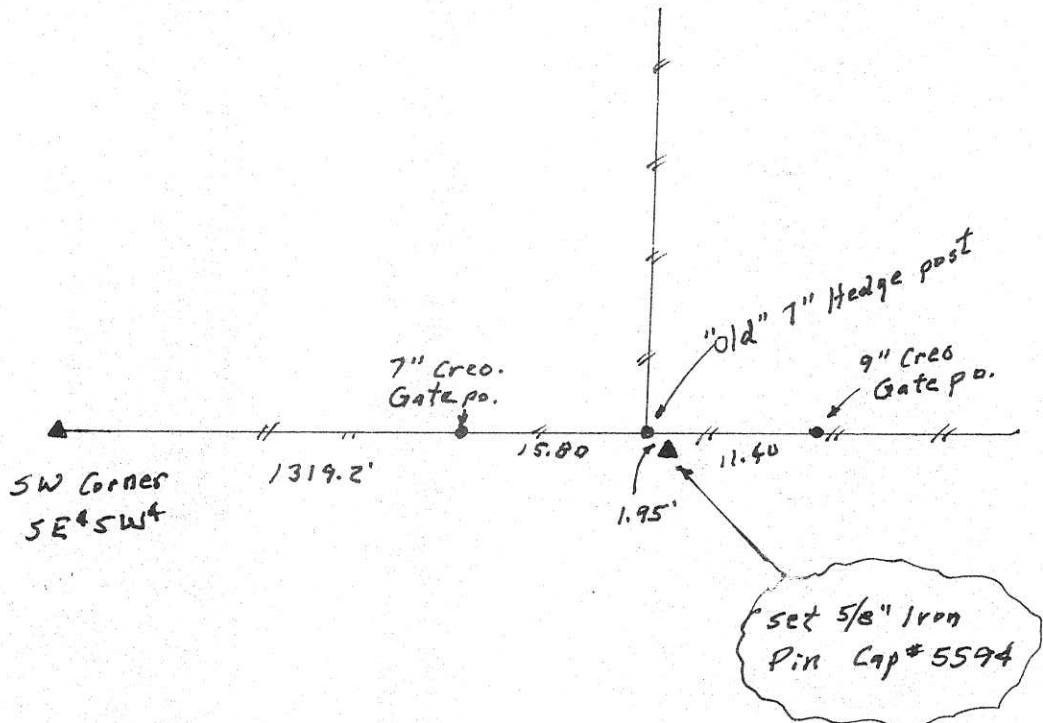
Show reason for preparing this certificate, the evidence and detailed procedures used in establishing the corner positions and monumentation found or placed

Monument Description and Remarks: Probed & dug all around and under 6" tree at location from old ties. Did not find monument. set 5/8" Iron pin at location shown on old ties from Co. Engr. Office.



PLAN - VIEW

(Show a minimum of three reference ties to durable physical objects, relevant monuments and physical conditions that will enable recovery of the corner.)



I hereby certify that the survey work was completed and this land surveying document was prepared by me or under my direct personal supervision and that I am a duly licensed land surveyor under the laws of the state of Iowa

Signature: Abie C. Davis

Abie C. Davis, P.E. & L.S.

Date: Mar. 28, 2018 Reg. No. 5594

My license renewal date is December 31, 2019

SEAL



List Corners to be Indexed

Corners	Section	Twp	Range
54	9	76N	20W

Found Limestone $15 \times 8 \times 6$ " &
 $1 - 14 \times 12 \times 6$ "

Set C.M. Limestone to P.C.M.
& 1- Stone on N.S.

C.M. 12" Deep

N $\frac{1}{2}$ cor. Sec. 16-76-20

Set 7-2-40

Notes: Wignall

