

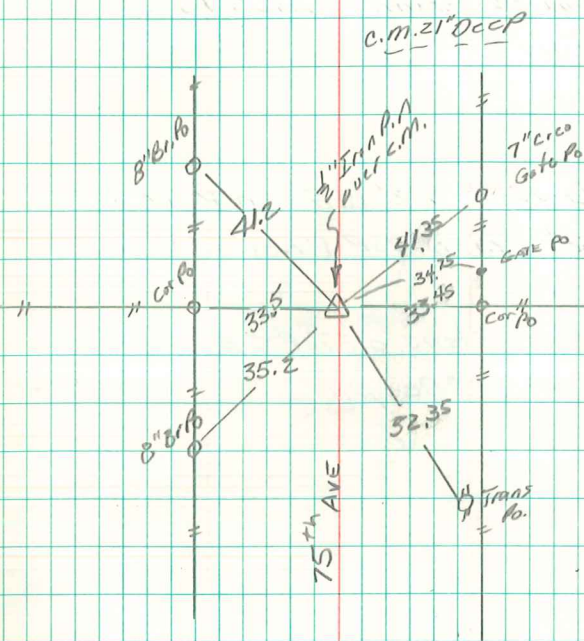
Found Granit Rock 16x11x12"

set c.m. 21" below surface of
Ground & Placed stone on top
5" Deep.

N $\frac{1}{2}$ Cor sec 19-76-20

set-5-16-40

Notes: Wignall-Kennedy, Ogden & Shore



26269

Center sec 19

10/26/06

Abie Davis