

INDEX LEGEND

COUNTY: MARION  
SECTION: 22, T-76N, R-20W  
CORNER: NE COR., NW 1/4, NW 1/4

SURVEYOR & SURVEY COMPANY:  
Jason S. Lowry, P.L.S.  
Lowry Land Services, L.L.C.  
752 Diamond Trail Rd., Searsboro, Iowa 50242

PREPARED BY AND RETURN TO:  
Jason S. Lowry, P.L.S.  
752 Diamond Trail Rd., Searsboro, Iowa 50242  
(641) 521-1160, lowrylandservices@gmail.com

Instr. Number: 22-1486  
BK: 2022 PG: 1486  
Recorded: 3/18/2022 at 2:55:19.0 PM  
County Recording Fee: \$7.00  
Iowa E-Filing Fee: \$3.00  
Combined Fee: \$10.00  
Revenue Tax:  
KAREN SCHWANEBECK, RECORDER  
Marion County, Iowa

**UNITED STATES PUBLIC LAND SURVEY CORNER CERTIFICATE**

Land Survey Monuments situated in Section 22, Township 76 North, Range 20 West of the Fifth Principal Meridian, Marion County, Iowa. Previously recorded in Book 2, Page 400 in the Marion County Recorder's Office.

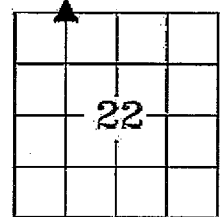
**MONUMENT DESCRIPTION & REMARKS**

NE Cor., NW 1/4, NW 1/4- Found 5/8" rebar using previous ties.

One of previous ties missing. This corner was used for a plat of survey in the SE 1/4 of the NW 1/4 of Section 22.

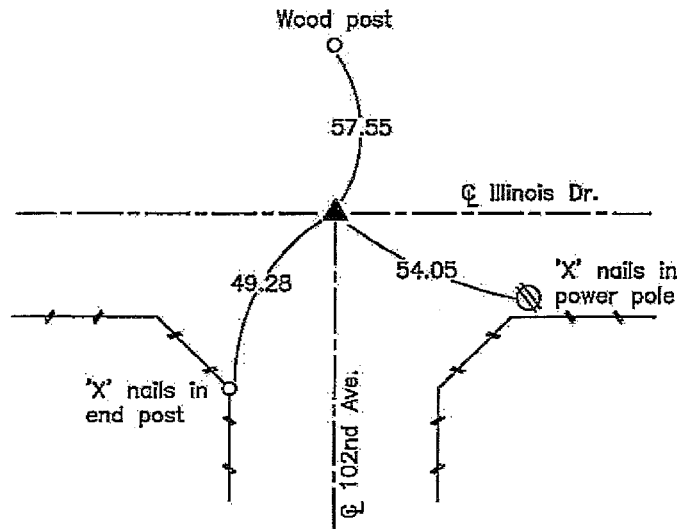
PLAN VIEW

No Scale

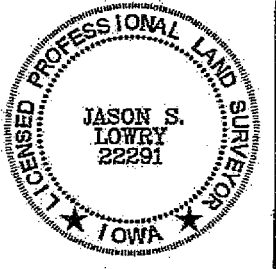


NE Corner  
NW 1/4 of the NW 1/4  
Section 22

Found 5/8" rebar



NOTE: ALL TIES ARE PLUMB MEASUREMENTS TO ORANGE SURVEY MARKER UNLESS NOTED.



I hereby certify that this land surveying document was prepared and the related survey work was performed by me or under my direct personal supervision and that I am a duly Licensed Land Surveyor under the laws of the State of Iowa.

My license renewal date is 12/31/2023

Pages covered by this seal: 1 - 1

*Jason S. Lowry*  
Jason S. Lowry

Iowa Lic. No. 22291

*3/18/22*  
Date

LEGEND

- ▲ Section Corner Found
- △ Section Corner Set
- Existing Fence

LAND CORNERS TO BE INDEXED

Land Corner	Section	Township	Range
NE Corner	22	76	20
NW 1/4, NW 1/4			

LOWRY LAND SERVICES, L.L.C.

752 DIAMOND TRAIL RD., SEARSBORO, IOWA 50242, 641-521-1160

PROJ. NO. 1922

DATE OF SURVEY: 03/16/22

CERT NO. 2/4

SW COR SE<sup>1</sup>SW<sup>4</sup>

SEC 15-76-20

