

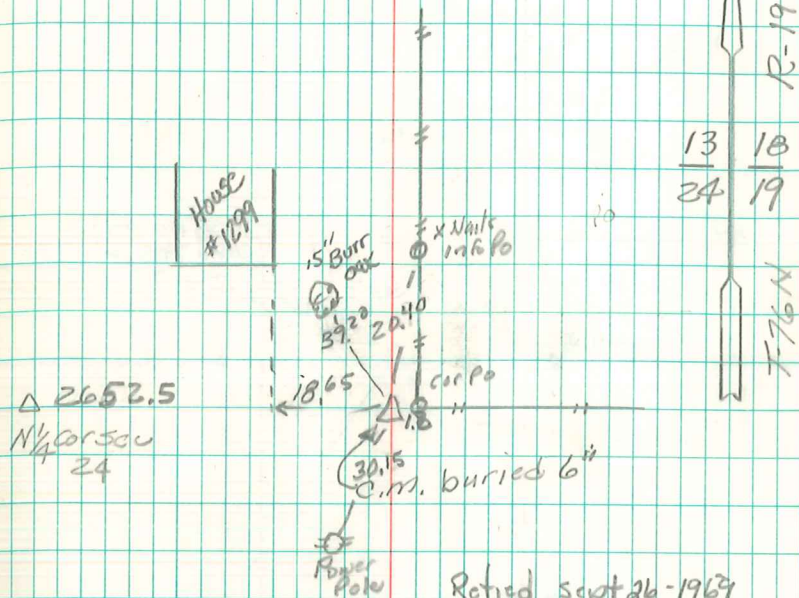
Set C.M. & Placed Red Sandstone  
13" x 9" x 2" above c.m.

28.5' S.E. of Hedge Tree  
20.9' North to 10" Hedge Cor Po  
15.1' N.E. to 8" " " "

N.E. Cor sec 24-76-20

Set - 4-25-40

Notes: Kennedy, Wignall, Ogden  
Shore & Eddinger



△ 2652.5

N 1/4 Cor Sec  
24

c.m. buried 6"

Retired Sept 26-1969  
Ray McMurray L.S.

Abie Davis 3/9/05