

Found Granite Rock 20"x14"x8"
 3" Concrete Filled drain Tile &
 1-2" HorseShoe Tile also some
 Small Pieces

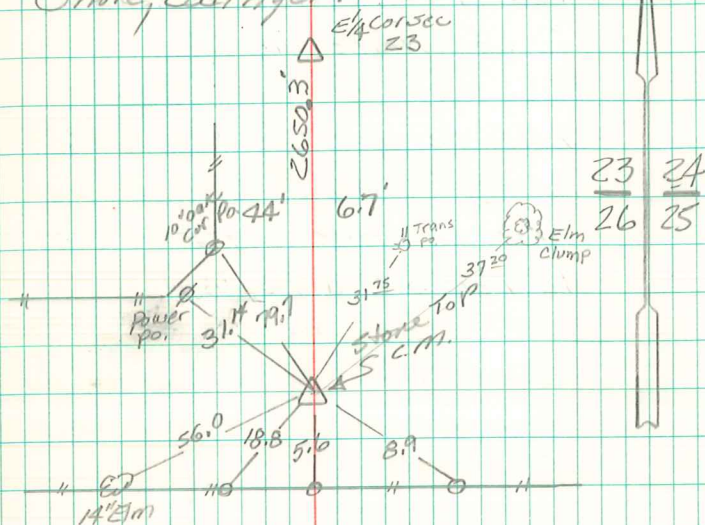
Lowered HorseShoe Tile in orig.
 Position, set c.m. on top of tile &
 Placed 3" Tile at base of c.m.
 Stone top c.m. 26" below surface

72.9' S.E. of Tele Pole
 79.7' S.E. of 10" oak cor Po.
 6.7' West " split oak Po.
 169.6' " " 10" maple
 56.0' N.E. " 14" Elm

N.E. Cor. Sec. 26-76-20

Set: 4-19-40

Notes: Kennedy-Wagnall, Ogden-
 Shore, Edlinger.



original Cor Stone
 destroyed. New cor Stone
 set by I.S.H.C. 1960

Ret'd 8/30/99
 Brian Morrissey