

Found sandstone 6" x 12" x 3" and  
2-1 1/2" tile

Set c.m. over 1-1/2" tile &  
Put stone on top c.m.

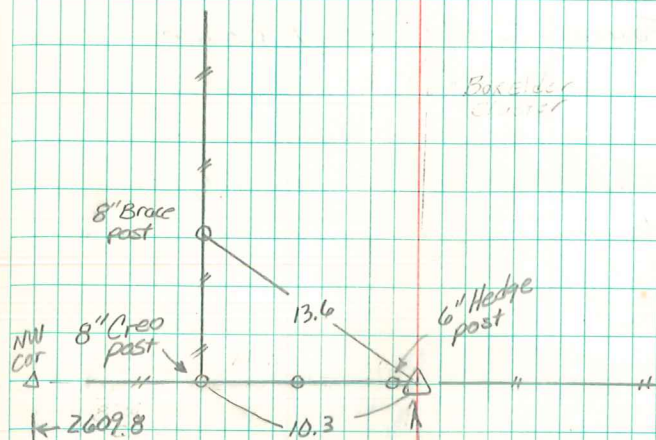
c.m. 15" deep.

N 1/4 Cor sec 28-76-20

Set 5-14-40

Notes: Wignall

35



Found Conc. 12" diam. 15" deep  
on E. side hedge post.  
Set 1 1/4" iron bar on top c.m.  
& 1/2" iron pin w/cap 10" above  
ground.

Abie Davis 11/18/97