

KAREN SCHWANEBECK, RECORDER
MARION COUNTY IOWA

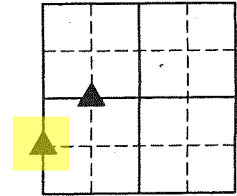


GARDEN & ASSOC. P.O. Box 451, Oskaloosa, Iowa 52577-0451 Phone: (641)672-2526

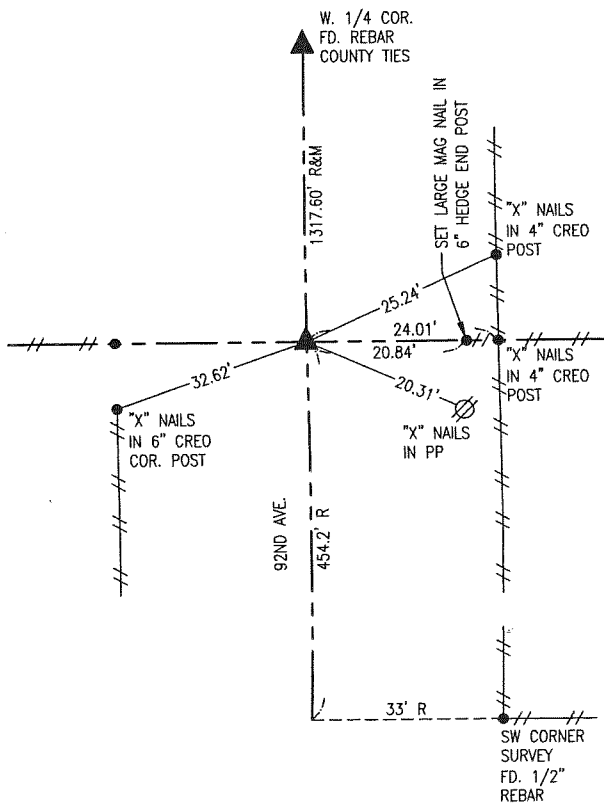
UNITED STATES PUBLIC LAND SURVEY CORNER CERTIFICATE

OF

Land Survey Monuments situated in Section 28, Township 76, Range 20, of the Fifth Principal Meridian, MARION County, Iowa. Previously recorded in N/A in County Recorder's Office. Monument Description and Remarks: SEE BELOW

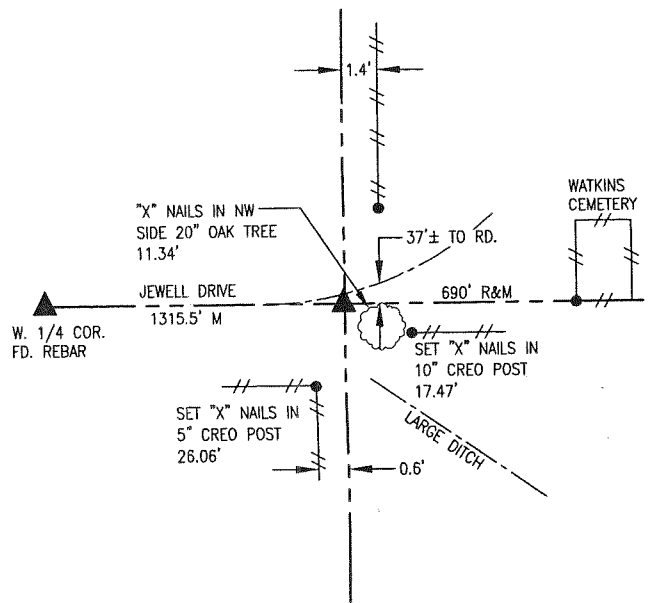


SW CORNER
NW 1/4-SW 1/4



NOTE: CORNER WAS RESET IN ACCORD TO THE PLAT OF SURVEY IN BOOK 218 ON PAGE 398 BY ABIE DAVIS PE-LS #5594 AS SHOWN. 5/8" REBAR 0.3 DEEP.

NE CORNER
NW 1/4-SW 1/4



SET 5/8" X 30" REBAR WITH CAP #11420 ON LINE FROM W. 1/4 COR. TO SW CORNER CEMETERY (SL) AND RECORD DISTANCE (690') WEST FROM SW CORNER CEM. THIS FITS THE EXISTING FENCES N&S AS SHOWN.

I hereby certify that this land surveying document was prepared and the related survey work was performed by me or under my direct personal supervision and that I am a duly licensed Professional Land Surveyor under the laws of the State of Iowa.

Gary Wayne Keith 20 Dec 2013
Gary Wayne Keith, P.L.S. Date
License number: 11420
My license renewal date is December 31, 2014

SEAL



| Corners | Section | Township | Range |
|----------------------------|---------|----------|-------|
| SW CORNER NW 1/4-SW 1/4 | 28 | 76 | 20 |
| NE CORNER NW 1/4-SW 1/4 | 28 | 76 | 20 |

pl. # 7- cre. Ret Garden & Assoc. Enr