

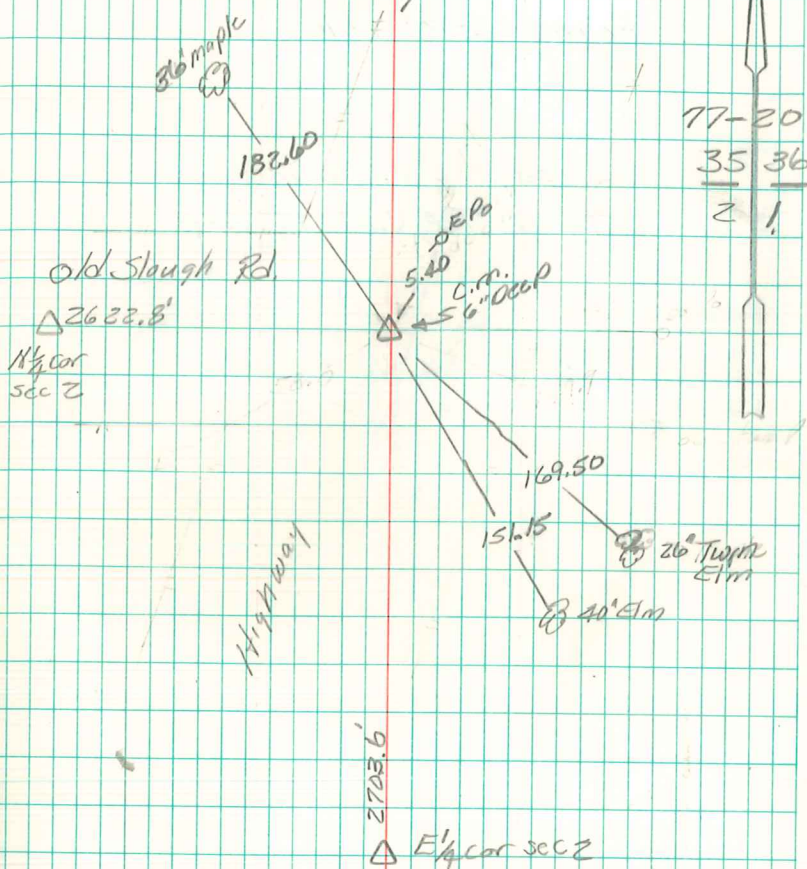
Found 2-sandstone 1-12"x10"x5"
 & 1-12"x12"x6" also 2-4" Drain tile
 & 2-0 tile

set C.M. over 10 tile in its orig.
 up-right position. 1 0 tile laying
 down N&S, stones on West side
 and 4" tile on N. side C.M.

N.E. Cor sec 2-76-20

Set-12-26-39

Notes: Wignall-Koons, Harger
 Hewitt & Eddinger



Retied By
 J.H.C.
 Aug-1960