

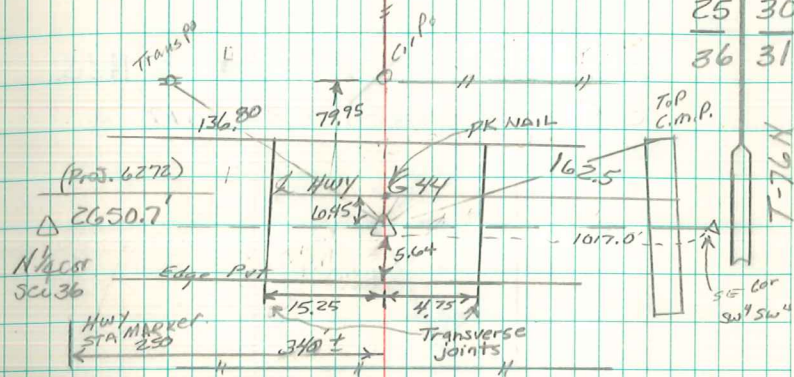
Found Sandstone 14" x 7" x 5"
 & 2-2 1/2" Ø Tile

Set c.m. over Crockery Placed
 Tile on West side,
 Stone on North side

N. E. Cor. sec 36-76-20

Set 11-7-39

Notes: Mignall - Keens, Russell,
 & Eddinger.



cut "+" in conc. 6.45 S of put. &

Found 3/15/92

Pregon Quick

Retied 9/24/99

Pregon & Wadle

Orig. Corner was paved over in 2001. Reestablished
 from old ties & road plans

Abie DAVIS 5/29/02