

Found sandstone 12"x10"x8"  
over 2-Bricks Laying Flat.

the 3" Drain Tile was deep

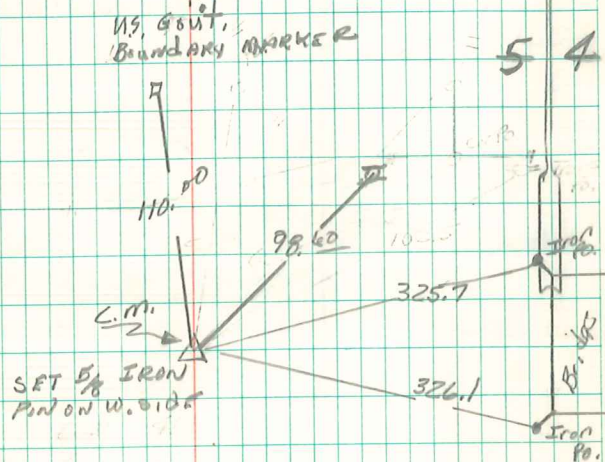
Set C.M. on tile To P.C.M. 14" under  
Road Bed. Stone on Top.

Eq Cor 5-76-20

Set - 12-11-40

Notes: Kennedy

Party = Shore & Mitchell



New Ties Jan 14-1970

RETIRED 12/13/93  
ADIE DAVIDS