



Document 19-5921

Book 2019 Page 5921 Type CORNR Pages 1  
Date 12/16/2019 Time 10:25 AM  
Rec Amt \$7.00

KAREN SCHWANEBECK, RECORDER  
MARION COUNTY IOWA

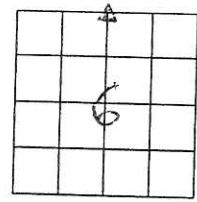
Prepared by Abie C. Davis, P.E. & L.S., 1428 Oregon St., Knoxville, IA 50138 (641) 842-5863

# UNITED STATES PUBLIC LAND SURVEY CORNER CERTIFICATE

OF  
Land survey Monuments situated in Section 6, Township 76N, Range 20W, of the Fifth Principal Meridian, Marion County, Iowa.

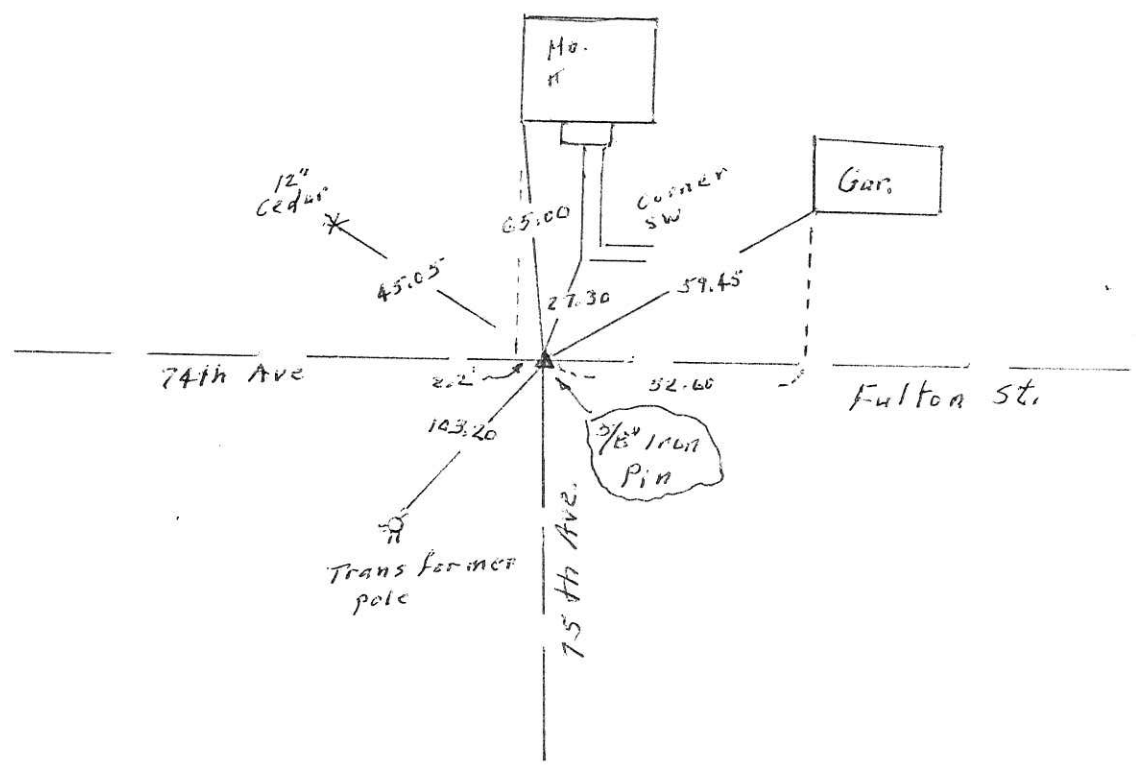
Previously recorded in Bk 3, Pg 59 in County Recorders Office.  
(book, page, document number, etc.)  
Show reason for preparing this certificate, the evidence and detailed procedures used in establishing the corner positions and monumentation found or placed

Monument Description and Remarks: Spike over CM gone. Set 5/8" Iron Pin over CM from existing ties.



## PLAN - VIEW

(Show a minimum of three reference ties to durable physical objects, relevant monuments and physical conditions that will enable recovery of the corner.)



I hereby certify that the survey work was completed and this land surveying document was prepared by me or under my direct personal supervision and that I am a duly licensed land surveyor under the laws of the state of Iowa

Signature: Abie C. Davis  
Abie C. Davis, P.E. & L.S.  
Date: 12/12/2019 Reg. No. 5594  
My license renewal date is December 31, 2019

SEAL



List Corners to be Indexed

Corners	Section	Twp	Range
N4	6	76N	20W

Pd \$7.00 Cash - Ret Abie Davis

Found old survey oak stake  
12" Long.

Set c.m. over some pieces of  
broken crockery.

Put oak stake on south side c.m.

