

Found 1-3" Drain tile & 2-2" D tile

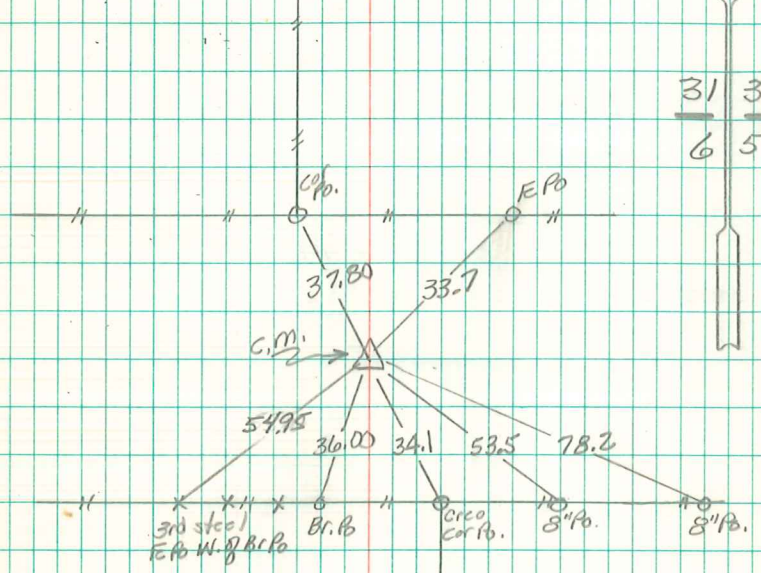
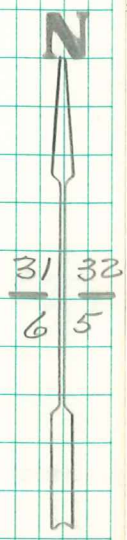
Set C.M. on North side, Put
sandstone 10"x6"x5" on Top C.M.

N.E. Cor 6-76-20

Set Dec 11-1940

Notes - Nandell

Party = Wells, Burrus & Harger



Tics checked
2-20-70

7/15/05
Brian Morrissey