

KAREN SCHWANEBECK, RECORDER
MARION COUNTY IOWA



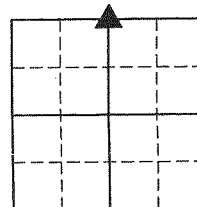
GARDEN & ASSOC. P.O. Box 451, Oskaloosa, Iowa 52577-0451 Phone: (641)672-2526

UNITED STATES PUBLIC LAND SURVEY CORNER CERTIFICATE

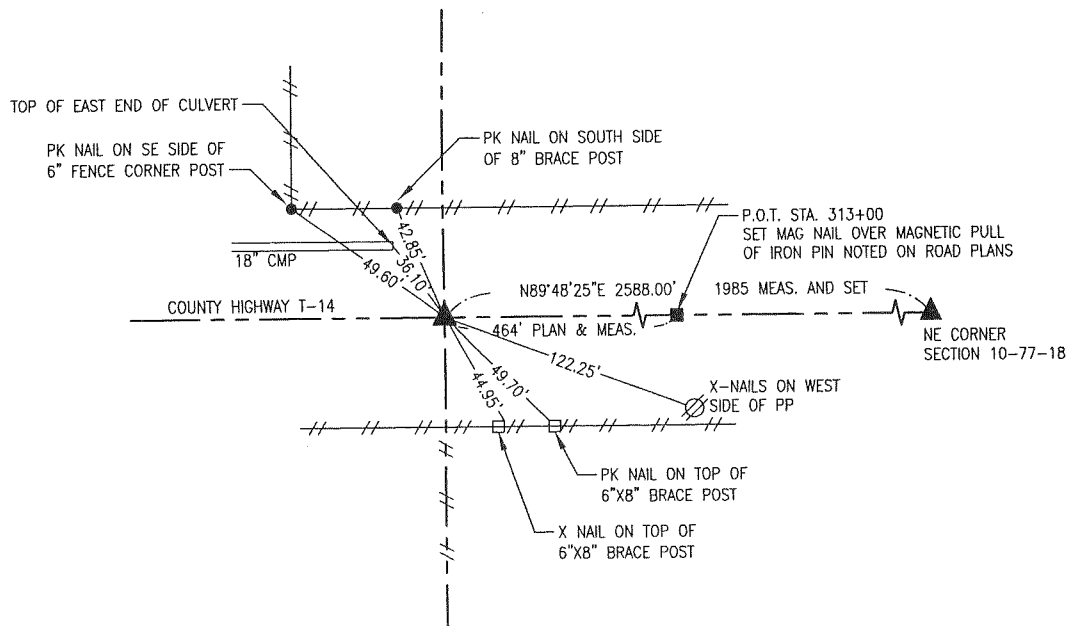
OF

Land Survey Monuments situated in Section 10, Township 77, Range 18, of the Fifth Principal Meridian, MARION County, Iowa. Previously recorded in NO CERTIFICATE OF RECORD in County Recorder's Office.

Monument Description and Remarks: SEE BELOW



NORTH 1/4 CORNER



MARCH 5, 2015

SET MAG NAIL IN ASPHALT 1.3' NORTH OF CENTERLINE AT FENCELINE SOUTH PER 1948 RIGHT OF WAY EASEMENT FOR ROAD PROJECT NO. S-922. DISTANCE WEST FROM NE CORNER OF SECTION 10 DETERMINED FROM 1985 MEASUREMENT BY PLS 6708. LOCATION ALSO SUPPORTED BY DISTANCE (464') SHOWN ON ROAD PLANS FROM P.O.T. STA. 313+00.

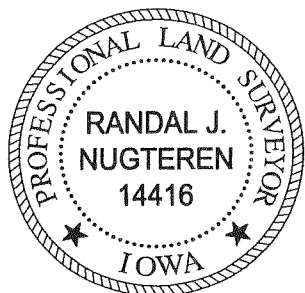
I hereby certify that this land surveying document was prepared and the related survey work was performed by me or under my direct personal supervision and that I am a duly licensed Professional Land Surveyor under the laws of the State of Iowa.

Randal J. Nugteren March 11, 2015
Randal J. Nugteren, P.L.S. Date

License number: 14416

My license renewal date is December 31, 2016

SEAL



List Corners to be Indexed			
Corners	Section	Township	Range
N. 1/4 COR.	10	77	18

P.L.S. 700 ck - Ret Garden & Assoc env

Established Cor. at Mid. Point in
Rd From Cor Post, on North & South
Sides of Road. 4.6 North of line
between Known Corners.

Set c.m.

N $\frac{1}{2}$ Cor 10-77-18

Set: 10- -39

Notes: Wignall

