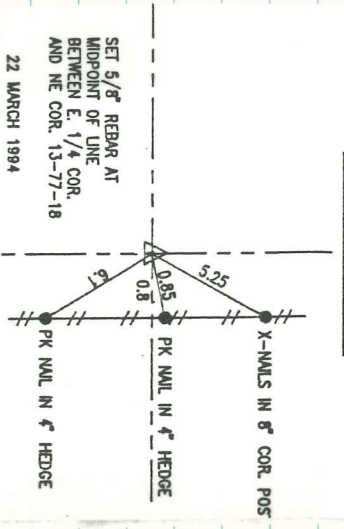


NE COR. SE-NE 13-77-18

NE COR. SE-NE
13-77-18



SET 5/8" REBAR AT
MIDPOINT OF LINE
BETWEEN E. 1/4 COR.
AND NE COR. 13-77-18
22 MARCH 1984



RETRIED APR. 11 - 1984
LEADY NUG TAKEN