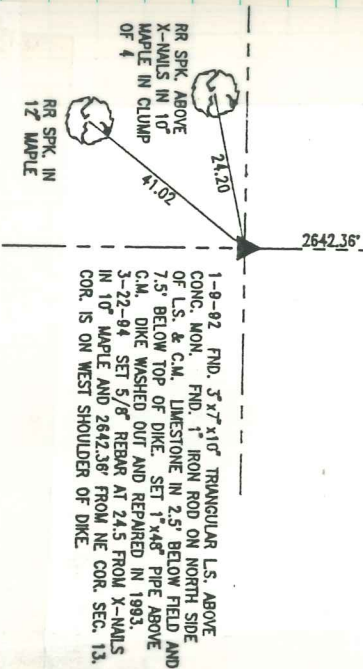


Found 1" Iron Rod 5' long &
1-2" round tile

Set C.M. over 1-2" round tile
" 5' Iron Rod on North Side C.M.
" Stone on Top C.M.

E 1/4 Cor 13-77-18
Set - 10-31-40
Notes - Kennedy
Party = Wells, Burreus, Crozier & Hewitt

E. 1/4 COR.
13-77-18
NE COR.
SEC. 13



13-78

RETIRED APRIL 1-1994
JERRY MUGGEREND

Ed. 3"x7"x10" Triangular L.S. above conc. mon. fd. 1" iron rod
N. side L.S. 7' cm, L.S. 15' 2.5' below field & 7.5' below
top of dike. Set 1"x48" pipe above

Jan 9, 1992

Sardien.