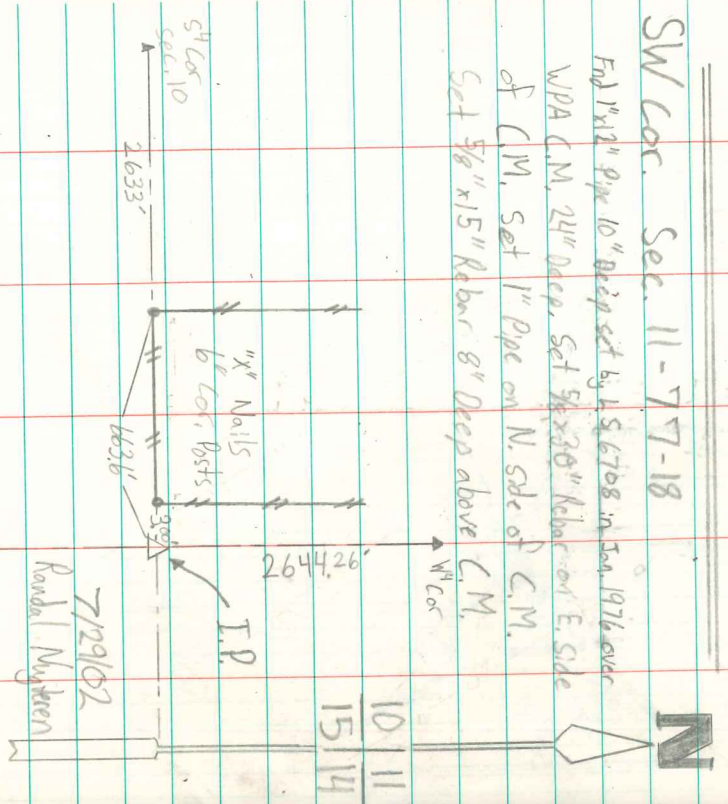


Found one Sand Stone 8'x6'x4"
one Great Rock 12'x7'x7"

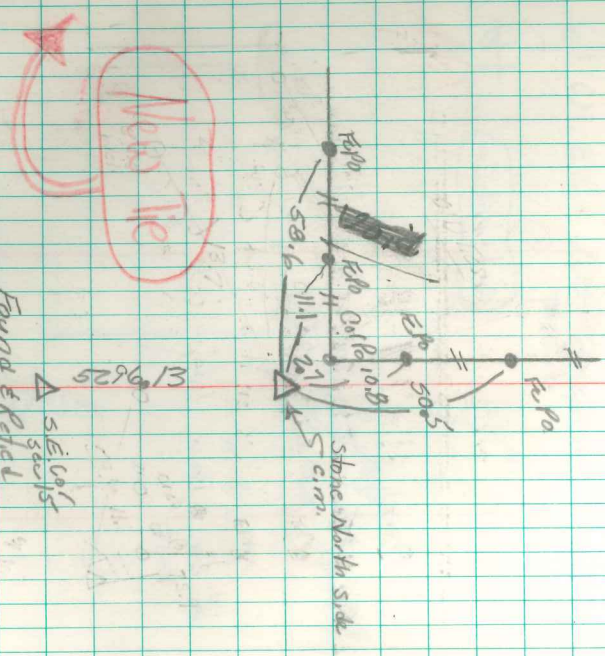
Set am over Broken tile
" Stone on North side am

SW Cor. Sec. 11-77-18

Find 1"x12" Pipe 10" Deep set by L.S. 6708 in Jan. 1976 over
WPA C.M. 24" Deep. Set 5/8"x30" Rebar on E. Side
of C.M. Set 1" Pipe on N. Side of C.M.
Set 5/8"x15" Rebar 8" Deep above C.M.



N.E. Cor 15-77-18
Set 10-24-39
Notes: Kennedy
Roth - Frazier



By Nugteren & Johnson
Jan 16-1976