

KAREN SCHWANEBECK, RECORDER  
MARION COUNTY IOWA

Prepared by Abie C. Davis, P.E. & L.S., 1428 Oregon St., Knoxville, IA 50138 (641) 842-5863

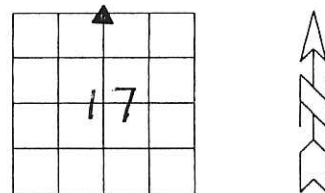
### UNITED STATES PUBLIC LAND SURVEY CORNER CERTIFICATE OF

Land survey Monuments situated in Section 17, Township 77 N, Range 18 W, of the Fifth Principal Meridian, Marion County, Iowa.

Previously recorded in N/A in County Recorders Office.

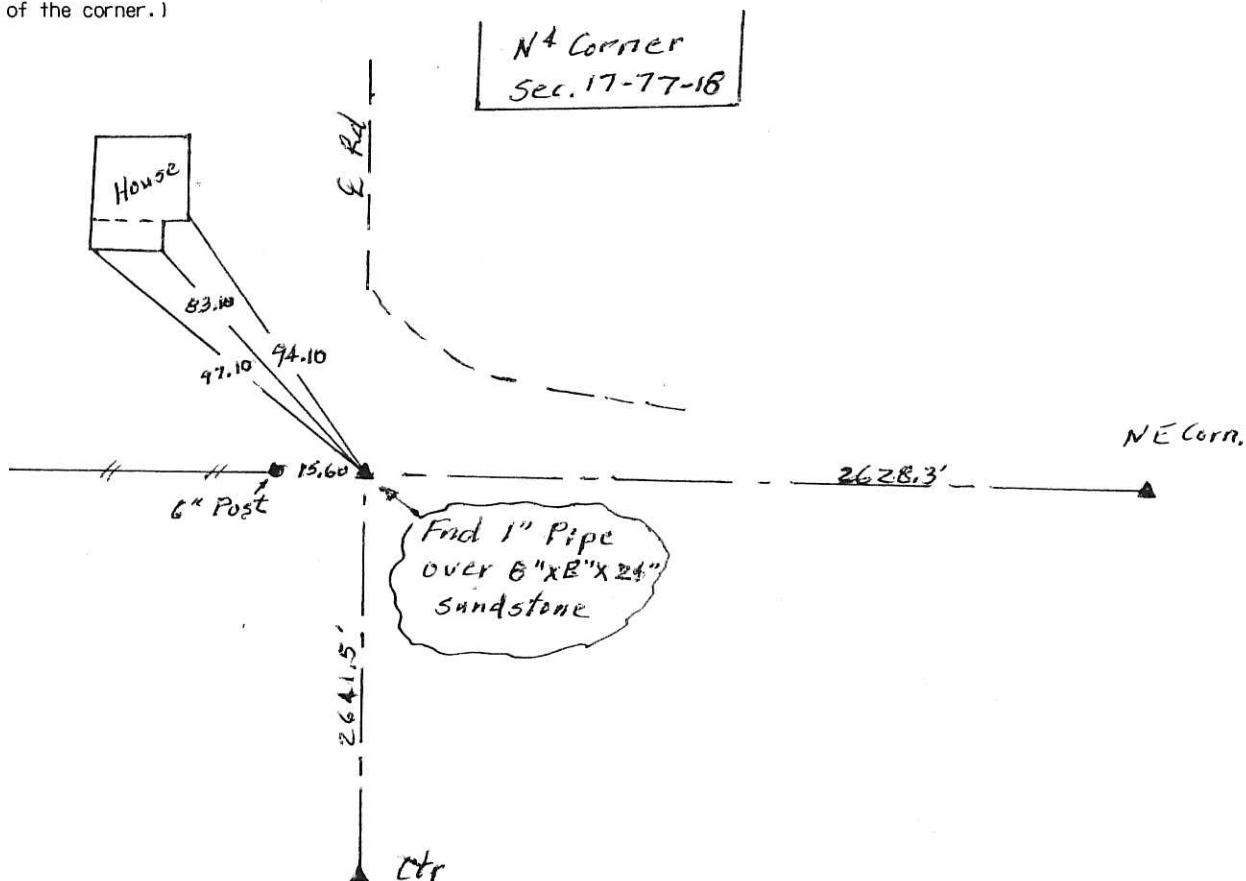
Show reason for preparing this certificate, the evidence and detailed procedures used in establishing the corner positions and monumentation found or placed

Monument Description and Remarks: End 1" Pipe over  
8"x8"x24" sandstone and 1"x24" pipe on South  
side stone.



### PLAN - VIEW

(Show a minimum of three reference ties to durable physical objects, relevant monuments and physical conditions that will enable recovery of the corner.)



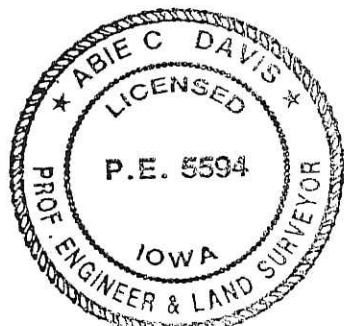
I hereby certify that the survey work was completed and this land surveying document was prepared by me or under my direct personal supervision and that I am a duly licensed land surveyor under the laws of the state of Iowa

Signature: Abie Davis

Date: 6/24/16 Reg. No. 5594

My license renewal date is December 31, 2017

SEAL



List Corners to be Indexed

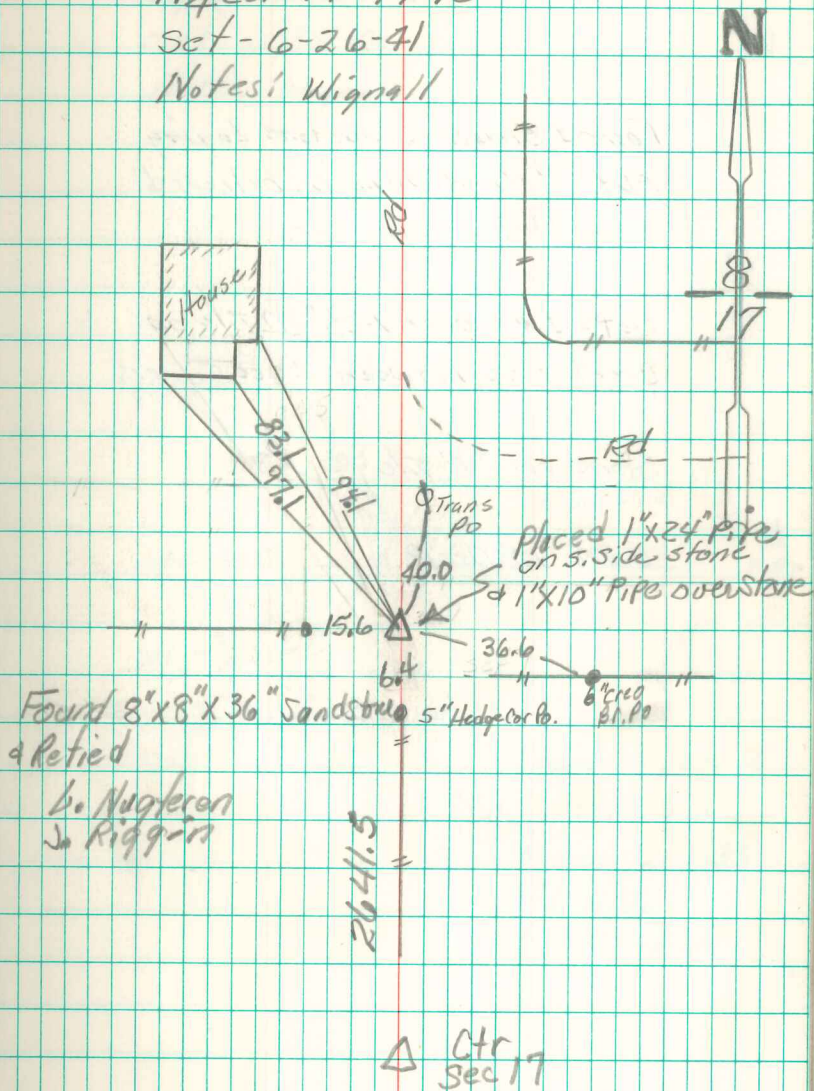
Corners	Section	Twp	Range
N4 Corner	17	77N	18W

Pds 700 cash - Ret Abie Davis

Found square sandstone 24" on  
over 1-2" round tile

Did Not set c.m. stenciled stone  
& left in its orig. place

N<sup>1</sup>/<sub>4</sub> Cor 17-77-18  
Set - 6-26-41  
Notes: Wignall



Found 8" x 8" x 36" Sandstone 5" Hedge Cor. Co.  
& Retied

L. Nugleron  
J. Riggan

△ Ctr  
Sec 17