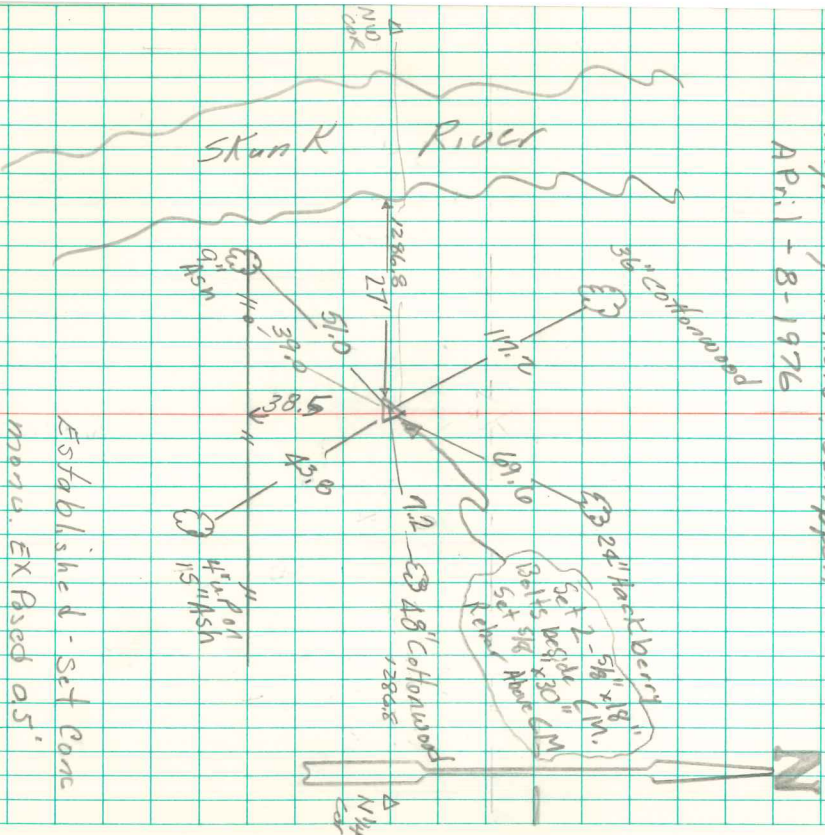


N.W. Cor N.E.-N.W. Sec 23-77-18
 Established Cor By Smoker Eng.
 Nuytzen, old field & Campbell
 April - 8-1976



Established - Set Cont
 mon. EX Pased 05'
 Set on line & midway
 Ref. N.W. & N.E. corner 23

10/23/99
 Randa M Nuytzen