



Document 20-682

Book 2020 Page 682 Type CORNR Pages 1
Date 2/11/2020 Time 10:52 AM
Rec Amt \$7.00



GARDEN & ASSOC.

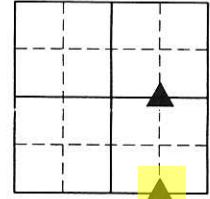
P.O. Box 451, Oskaloosa, Iowa 52577-0451 Phone: (641)672-2526

KAREN SCHWANEBECK, RECORDER
MARION COUNTY IOWA

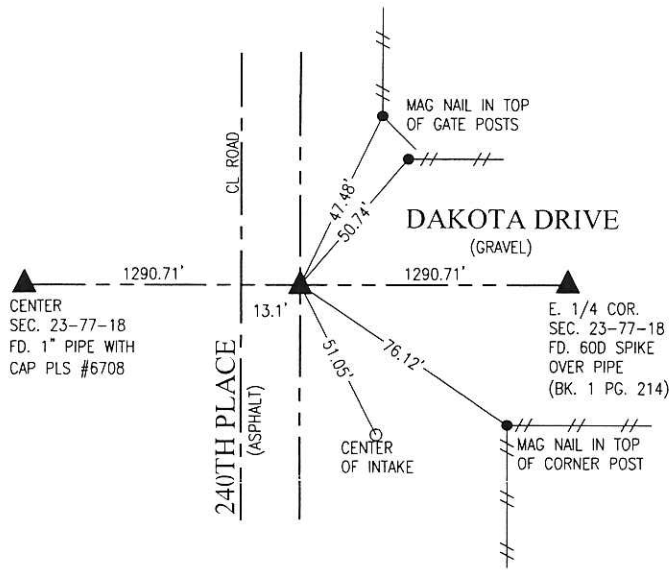
UNITED STATES PUBLIC LAND SURVEY CORNER CERTIFICATE

OF

Land Survey Monuments situated in Section 23, Township 77, Range 18, of the Fifth Principal Meridian, MARION County, Iowa. Previously recorded in NO CERTIFICATE OF RECORD in County Recorder's Office. Monument Description and Remarks: SEE BELOW



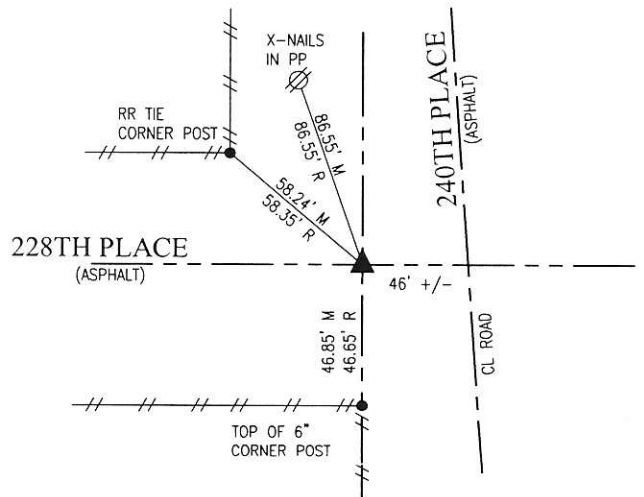
NW CORNER
NE 1/4-SE 1/4



OCTOBER 1999
LS 14416 SET A 5/8" X 30" REBAR 6" DEEP ON THE SHOULDER OF 240TH PLACE AT THE MIDPOINT BETWEEN THE E 1/4 AND CENTER OF SECTION AS SHOWN IN BOOK 2 ON PAGE 50.

JANUARY 2020
CORNER HAS BEEN COVERED UP BY AN ASPHALT OVERLAY. SET MAG NAIL ABOVE 5/8" X 30" REBAR AT THE MIDPOINT BETWEEN THE E 1/4 AND CENTER.

SW CORNER
SE 1/4-SE 1/4



OCTOBER 1999
LS 5594 SET AN 5/8" IRON PIN 4" DEEP IN ASPHALT RECORD DISTANCE WEST OF THE SW CORNER OF SEC. 23 ON LINE WITH ROAD P.I. TO THE WEST.

AUGUST 2009
LS 14416 FOUND A DRILL HOLE OVER THE 5/8" REBAR AND SET A PK NAIL IN THE DRILL HOLE AS PART OF A SURVEY RECORDED IN BOOK 2009 ON PAGE 5286.

JANUARY 2020
CORNER HAS BEEN COVERED UP BY AN ASPHALT OVERLAY. SET MAG NAIL ABOVE 5/8" REBAR USING COUNTY ENGINEER TIES, DISTANCE NORTH TO THE NW CORNER OF THE EAST 1/2 OF THE SE 1/4 AND DISTANCE WEST TO THE CALCULATED ROAD P.I.

I hereby certify that this land surveying document was prepared and the related survey work was performed by me or under my direct personal supervision and that I am a duly licensed Professional Land Surveyor under the laws of the State of Iowa.

Bobby J. Maddaleno 2-7-20
Bobby J. Maddaleno, P.L.S. Date

License number: 19960
My license renewal date is December 31, 2021

SEAL

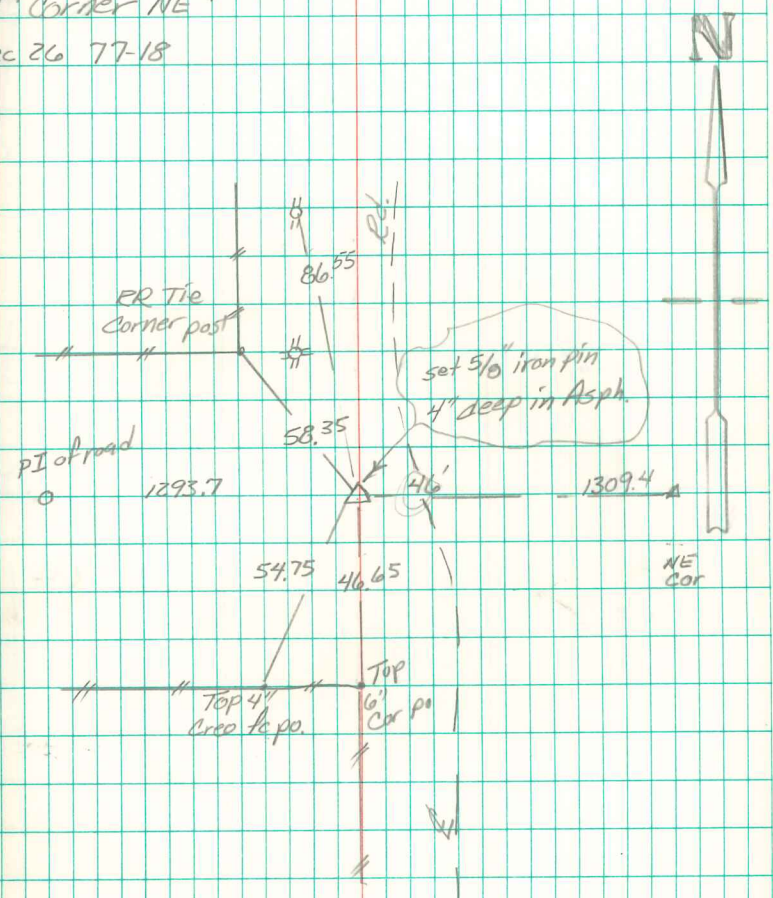


| List Corners to be Indexed | | | |
|----------------------------|---------|----------|-------|
| Corners | Section | Township | Range |
| SW CORNER SE 1/4-NE 1/4 | 23 | 77 | 18 |
| SW CORNER SE 1/4-SE 1/4 | 23 | 77 | 18 |

P.L.S. Book - Ret Garden & Assoc env

N⁴ Corner NE⁴

Sec 26 77-18



Set corner 1309.4' west of NE Corner as called for in road survey in 1989, and on line between NE Corner and road PI 1293.7 West. Abie Davis
11/12/99