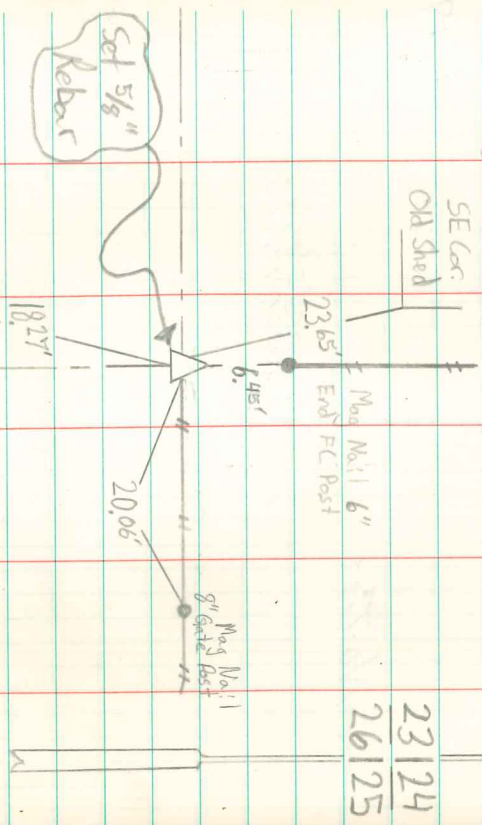


NW cor. Sec. 15-77-8

Find Fence cor from this. Corner post is leaning NNE, set at base of Corner post (SW side) & obtained New Reference ties



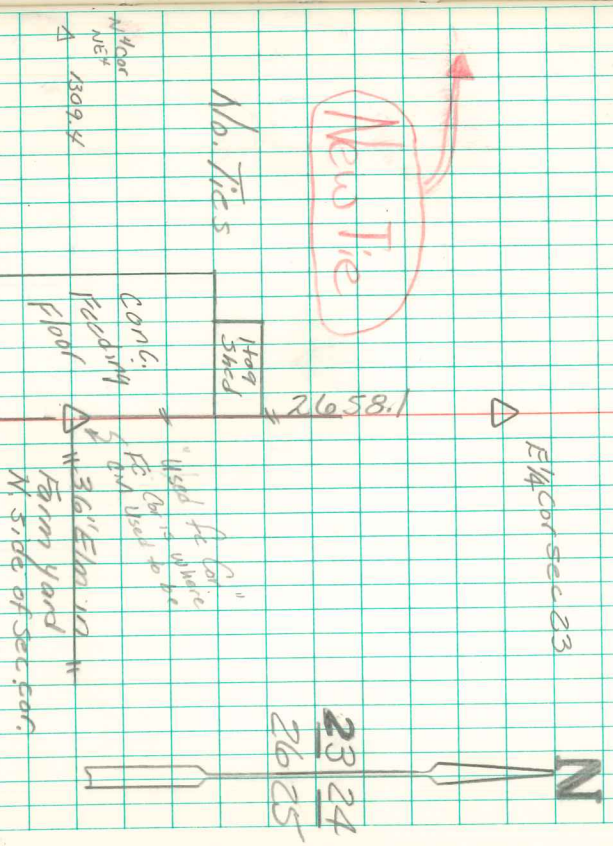
23124  
26125



11/5/07  
Randal Nygren

N.E. Cor Sec 26-77-18

New Tie



2324  
2625



March - 12-1975  
by Nygren, advised by Gary  
Stone wasn't found several years ago when 36" Elm Tree was standing - by testimony of John A. Wade Kroats. Tree has since been DAZED out. We used fence cor as Best Evidence.  
11/12/09  
Abt Davis