



Document 17-1113

Book 2017 Page 1113 Type CORNR Pages 1  
Date 3/17/2017 Time 10:55 AM  
Rec Amt \$7.00

KAREN SCHWANEBECK, RECORDER  
MARION COUNTY IOWA

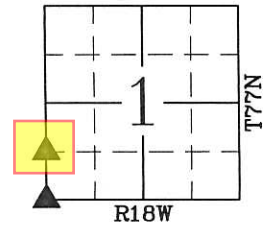


GARDEN & ASSOC. P.O. Box 451, Oskaloosa, Iowa 52577-0451 Phone: (515)672-2526

UNITED STATES PUBLIC LAND SURVEY CORNER CERTIFICATE  
OF

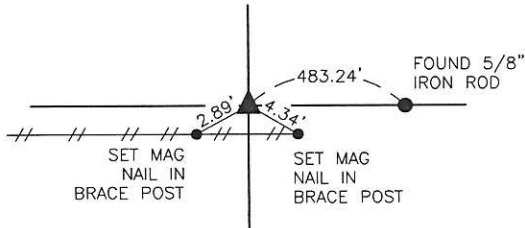
Land Survey Monuments situated in Section 1, Township 77, Range 18, of the Fifth Principal Meridian, MARION County, Iowa. Previously recorded in NO RECORD TIES in County Recorder's Office.

Monument Description and Remarks: CORNERS WERE USED IN A PLAT OF SURVEY IN THE SOUTHWEST 1/4 OF THE SOUTHWEST 1/4



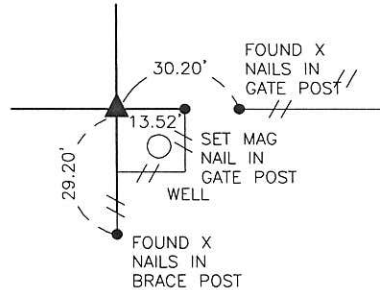
**NORTHWEST CORNER  
SW1/4 - SW1/4  
SECTION 1-77-18**

FOUND 5/8" IRON ROD  
WITH YELLOW CAP # 5594  
USING A SURVEY RECORDED IN  
BOOK 2003 ON PAGE 10904



**SOUTHWEST CORNER  
SECTION 1-77-18**

FOUND 3"x6" LIMESTONE AT GRADE  
IRON ROD  
WITH YELLOW CAP # 14416  
FOUND ON SOUTH SIDE.  
HOMEOWNER SHOWED US WHERE IT  
WAS AND RECALLS PREVIOUS  
SURVEYOR TELLING HER THAT THIS  
WAS THE SECTION CORNER  
"SEVERAL YEARS AGO". NO TIES  
EXIST FOR CORNER, NO SURVEYS  
FOUND RELATING TO CORNER.  
USED LOCATION AS FOUND.



I hereby certify that this land surveying document was prepared and the related survey work was performed by me or under my direct personal supervision and that I am a duly licensed Land Surveyor under the laws of the State of Iowa.

*[Signature]*  
SCOTT A. CATRON, P.L.S. Date 3-14-2017

License number: 22232  
My license renewal date is December 31, 2017

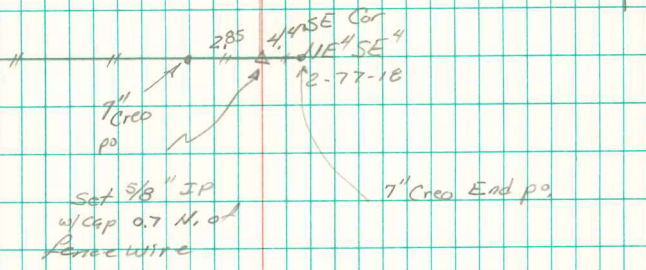
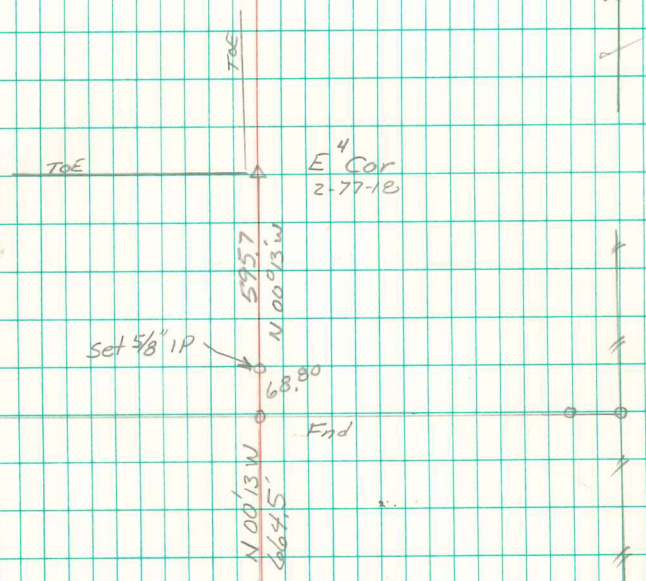
SEAL



List Corners to be Indexed			
Corners	Section	Township	Range
SW COR.	1	77	18
NW COR SW1/4 SW1/4	1	77	18
SE COR	2	77	18
NE COR	11	77	18
NW COR	12	77	18
NE COR SE1/4 SE1/4	2	77	18

env  
Pd \$700 Clk - Plat Garden & Assoc

E<sup>4</sup> Corner #  
SE Corner NE<sup>4</sup> SE<sup>4</sup>  
Sec 2-77-18



Set 5/8" IP  
w/ cap on N. of  
fence wire

Able Davis 12/22/03  
(See Corner cert.)