

Found lime rock 17"x9"x9" standing on ENO over 1-Brick laying flat

Set c.m. over 1-Brick Placed Rock Top c.m.

c.m. 12" Below Surface

N.E. Cor 30-77-18

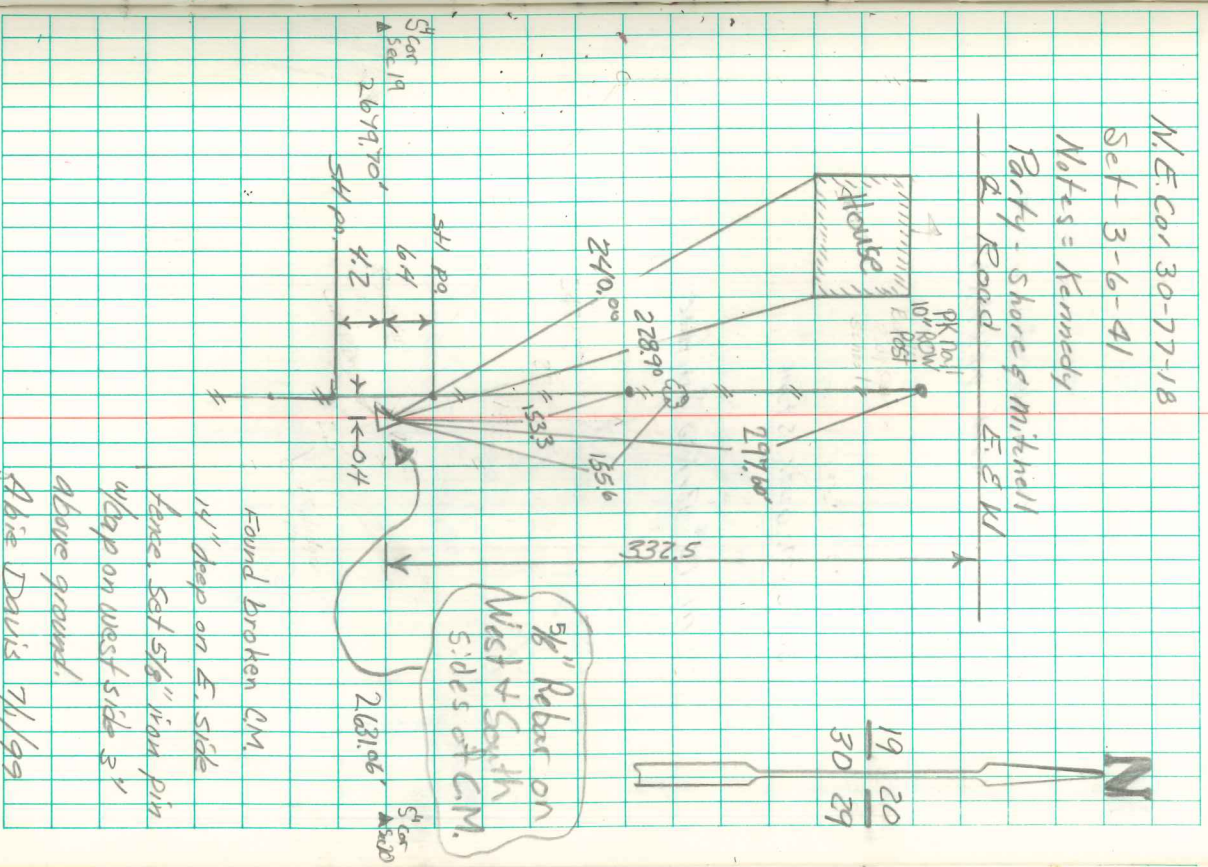
Set - 3-6-41

Notes = Kennedy

Party - Shore & Mitchell

A Road

E. & W.



Found broken c.m.
 14" deep on E. side
 fence. Set 5/8" iron pin
 4' deep on west side 3'
 above ground.
 Abie Davis 7/1/99
 Randal Mayhew 7/2/02