



Document 17-2119

Book 2017 Page 2119 Type CORNR Pages 1
Date 5/22/2017 Time 10:11 AM
Rec Amt \$7.00

KAREN SCHWANEBECK, RECORDER
MARION COUNTY IOWA

Prepared by Abie C. Davis, P.E. & L.S., 1428 Oregon St., Knoxville, IA 50138 (641) 842-5863

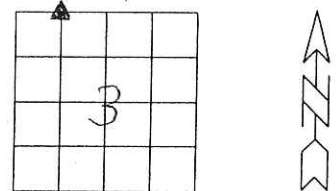
UNITED STATES PUBLIC LAND SURVEY CORNER CERTIFICATE OF

Land survey Monuments situated in Section 3, Township 77N, Range 18W, of the Fifth Principal Meridian, Marion County, Iowa.

Previously recorded in N/A in County Recorders Office.

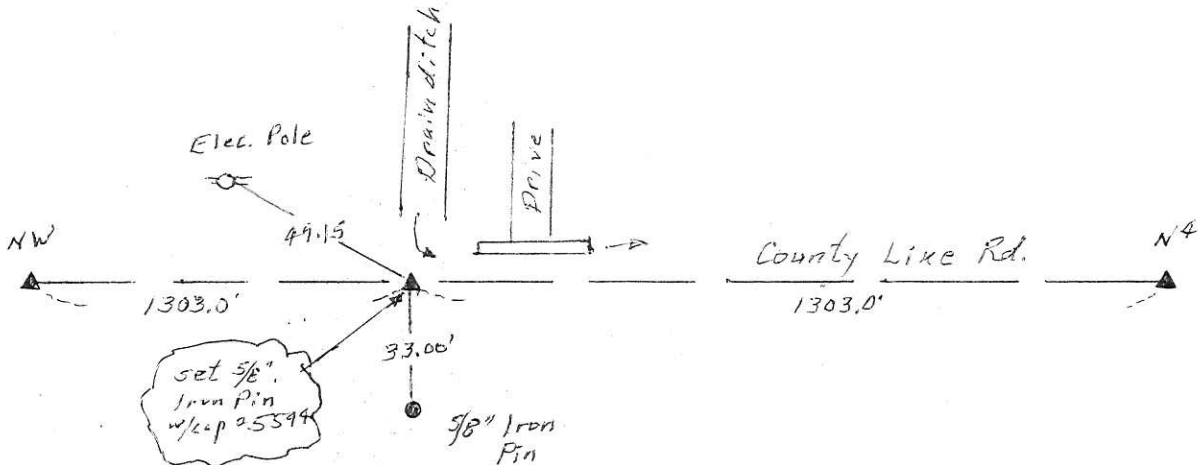
Show reason for preparing this certificate, the evidence and detailed procedures used in establishing the corner positions and monumentation found or placed

Monument Description and Remarks: Set Iron Pin cap #5594
at mid point 1/2 on line between the N4 and the
NW4 Corners



PLAN - VIEW

(Show a minimum of three reference ties to durable physical objects, relevant monuments and physical conditions that will enable recovery of the corner.)



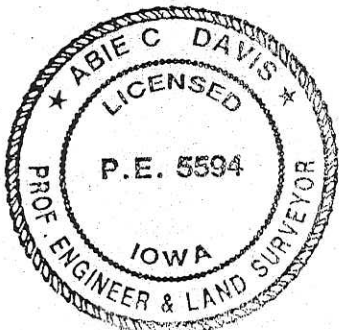
I hereby certify that the survey work was completed and this land surveying document was prepared by me or under my direct personal supervision and that I am a duly licensed land surveyor under the laws of the state of Iowa

Signature: Abie C. Davis
Abie C. Davis, P.E. & L.S.

Date: 5/17/17 Reg. No. 5594

My license renewal date is December 31, 2017

SEAL



List Corners to be Indexed			
Corners	Section	Twp	Range
NW Corner	3	77N	18W
NE4 NW4			

Pd \$700 cash - Ret Abie Davis