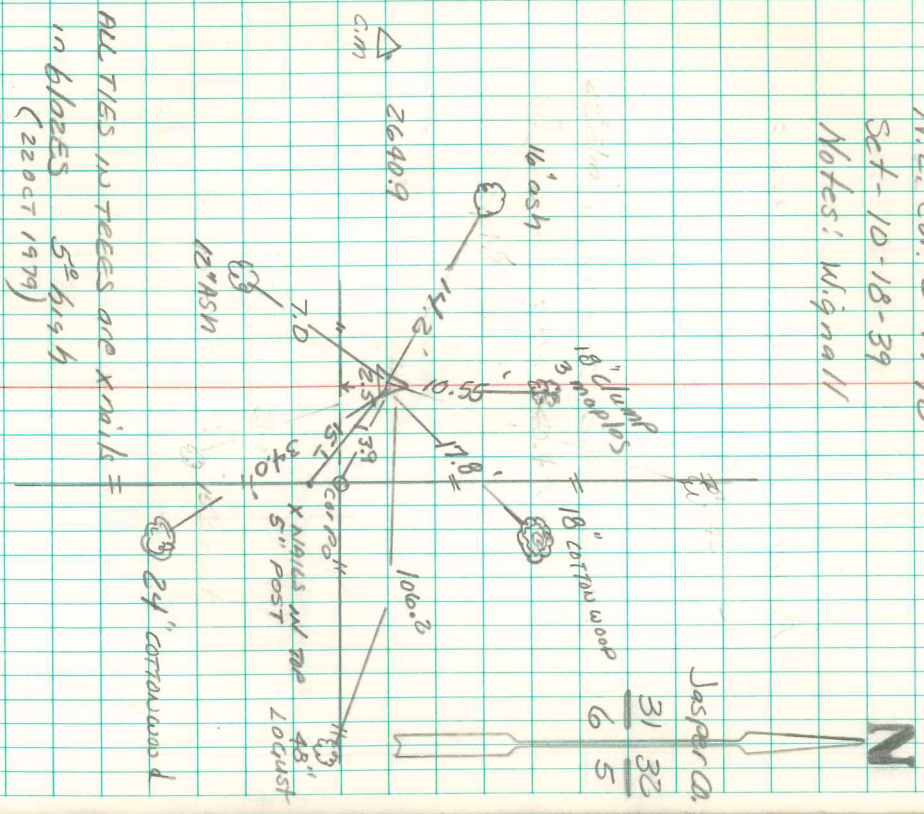


N.E. Cor. 6-77-18
 Set - 10-18-39
 Notes: Wignall



ALL TIES IN TREES ARE KNAILS
 IN 6 PLACES 5th 6194
 (22 OCT 1979)

Found lame stone 8"X10"X12" over
 2-2" round tile

Set 0.m. over 1-2" round tile
 " Stone on North side C.M.

22 OCT 1979
 R. NUGTEGEN
 L. REMARK

FOUND CM 3rd DEEP SET 15" X 8' X 4" L.S.
 OVER CM w/ 1" PIPE ON NO. SIDE

Jasper Co.

31 32
 6 5